

ODD. Design & Build

HK.

禾承設計有限公司

住宅和商業室內設計

品牌建立設計與印刷

訂製家具

藝術品

裝潢





/ 關於我們

ODD室內設計 — 「空間是生活的載體，更是藝術的立態詮釋」 —

我們以「解構日常，重組美學」為軸心，精準融合功能與藝術，透過客製化動線設計與獨特空間語言，將抽象願景化為可觸的靈魂場域，為每一平方注入生命。

ODD從草圖到施工，全鏈條細節苛求。設計師與工程團隊無縫協作，確保「所見即所得」讓空間超越維度，讓美學扎根日常。最後以藝術性×精準度，重新定義人與空間的對話。

我們更擁有自己的工廠坐落於天津市寶坻口東工業園區，依賴完善的生產體系及業界領先的進口拆單軟體及ERP管理系統。工廠佔地逾3萬平方米，生產使用面積超1.5萬平方米，四大獨立車間涵蓋板式、型材、油漆 實木加工及原材料存儲，構建了高效且全面的生產系統。





製造

我們擁有配備板式、型材、實木及油漆全流程車間，以先進設備與技術確保產品從原料到成品的全程高效率管控。

板式車間採用2台星輝全自動下料CNC及德國豪邁電子鋸實現精準切割，結合2台豪邁全自動封邊機（支持PUR與激光封邊）和1台速派定制激光封邊機，打造無縫零膠痕的高端封邊工藝，輔以3台先達全自動鑽機與多功能門牆牆面混合清潔機包裝機，配備複雜度清潔工紙結構機，清潔工質門牆牆面混合機，並配備複雜度清潔件式機件。

型材車間集CNC鑽銑、雙頭鋸、倒角機於一體，搭配獨立高溫噴塗烤箱，確保型材加工精度與漆面耐久性（附著力提升30%）。

實木與油漆車間則專注細節與環保：木皮工藝採用台灣居瑞無縫拼縫機、萬銳客製化熱壓機及多通道拉絲機，實現天然紋理零瑕疵；木工環節配備2台數控加工中心、四面刨、砂光機等設備，覆蓋複雜造型量產需求；油漆線依托全自動UV噴霧、四面刨削、砂光機等設備，覆蓋複雜造型量產需求；油漆線依托全自動UV噴漆砂、純砂光機、鐵面自有工廠+全鏈把控，我們以進口設備、200+項品控節點及靈活客製化服務。



ODD. Design & Build

HK.

Cultur & Resort



Aranya Cafe Pavillion

Aranya 咖啡廳

2018 completed 完成

Type 類型 : Cafe 咖啡廳

Location 地址 : Beidaihe, China 北戴河, 河北

Size 總面積 : 290 m²

Concept Design to Site Supervision and logo design 概念設計與現場管理

Photo_Ruijing photo (廣松美佐江)

This smoothly curved big-hat-like building is built in the park of Aranya district, which is aiming for a simple and fine lifestyle resort community for along Gold Coast. The site is adjacent to the sand dune formed by sea breezes after a long period. The design's inspiration comes from a gentle breeze from the sea. The wind is one of essential natural elements to help people chill-out, which is suitable concept for the resting place project.

The combination of the grid-system of the column structure and the curved glass facade also makes an irregularity in the plan, which results in some columns being outdoors while others are indoors. The location of the courtyard is shifted from the center. As a result, this irregular plan with curved roof; the higher part of

the roof welcomes visitor and the lower part becomes sunshades underneath, helps breaking boredom in the space. In addition, the 120 mm-high eave with an aluminum roofing system and ultra transparent laminated glass facade creates an image of the lightness of the wind.

The widely cantilevered roof becomes sunshade, which help visitor cool down after playing in the park. Even though the indoor area is 90 m², the full-height and double-side glass facade does not put any stress on those who take a break. The pure white-in-color finish gives the visitors various scenes by the slight change of the sunlight through the day. Moreover, at night, the gently curved ceiling is emphasized by the light-up. The roof exists as if it floats in the wind.









這座具有流暢曲面狀如大帽子的建築位于阿那亞公園，意在沿黃金海岸線為該區域打造一個簡單而美好的度假社區。由于沿海，岸邊形成了形狀各異的沙丘，設計的靈感便來源于溫和的海風。對於一個休閒度假，讓人身心愉悅之地，風是非常重要的自然元素。柱網結構和立面的曲面玻璃產生不規則平面，使一部分柱子位于室外，一部分位于室內，中心形成一個內庭院。不規則平面，曲面屋頂，引人進入的屋頂高起部分，為下面遮陰的低矮之處，形成一個有趣而不單調的空間感受。另外，120mm厚的金屬鋁屋頂和極其通透的玻璃立面，創造了一幅輕盈如風的畫面。寬闊的懸挑式屋頂如同一個巨大的遮陽傘，遊客在公園裏遊玩後可在此處歇息放鬆。盡管室內面積只有90平方米，但四周通高的玻璃立面則完全沒有讓使用者感到壓抑。純淨明亮的空間內，不同時間光影的變化帶給使用者不一樣的感受。夜晚，在燈光的襯托下，曲面屋頂分外明顯，如同漂浮在風中一般。



AOLUGUYA HOTEL by HYATT 凱悅 敖麓谷雅酒店

2023 on going

Type 類型 : Hotel 酒店

Location 地址 : Harbin, China 哈爾濱

Size 總面積: 公共區域 4500m²

Concept Design to Site Supervision 概念設計與現場設計管理





Ananya Sanya Golf

三亞阿那亞高爾夫練習場

2021

方案

Type 类類型: sport

體育設施

Location 地址: ananya, Sanya

阿那亞 三亞

Size 總面積: 3000 m²

Concept Design to Site Supervision 概念設計與方案設計





Bus stop SEATOPIA

蔚藍海岸公車與擺渡車站台

2018 completed

完成

Type 類型: Traffic

交通設施

Location 地址: SEATOPIA Beidaihe

蔚藍海岸 北戴河

Size 總面積: -

Concept Design to Site Supervision 概念設計與現場設計管理



ODD. Design & Build

HK.

Catering



Akari by HILTON

希爾頓酒店 燈

2022 completed 完成

Type 類型 : Restaurant 餐廳

Location 地址 : Guiyang China 希爾頓酒店, 貴陽

Size 總面積 : 286 m²

Concept Design to Site Supervision and logo design 概念設計與現場設計管理

"Itadakimasu" we are saying before starting to have a meal. It expresses the gratitude for all life which will become our food. The greatest luxury is to have ingredients in season, which are gifts from the earth: consisting of water, fire, soil, wood and metal. For Japanese cuisine: tasting of the ingredient itself without excessive seasoning, it is the most important to find and gather the seasonal ingredients. In the oriental world including Japan, according to the lunar phase, we have measured the timing of harvesting, fishing and hunting. Therefore, the moon gives more influence on the oriental lifestyle than the sun. This restaurant "Akari", opened in Hilton Hotel, Guiyang CHINA, presents the gratitude our mother land and the moon. The five PDRs are subject to water, fire, earth, wood and metal with moon-like dimming lighting.



The diagonally-arranged planning in the rectangular space of PDRs, sushi counter and Teppanyaki counter makes the gap, which become small interior garden and keep the PDR privacy.



The facade expresses the reverence to the force and aesthetic shape created by nature. The rough rocks are applied without excessive processing. The part of the stone wall is pivot-able.



In the restaurant whose PDRs are main dining area, we made them as a single independent architecture and applied unique façade on each of them. To be used as a semi-closed PDR, water-rippled glass bricks are applied on the separation for certain privacy and openness at the same time. The warm color and material used in this fire-themed PDR. The odd-shape polar brick, on the back wall of the sushi counter, represents the light reflection on the water and creates a symbolic scene. By means of the Kumiko-like wood screen in front, the multiple-layers create a sense of depth and privacy for customers. By making slits between a cloak, display and walls, it is achieved to reduce the feeling of pressure.





In the restaurant whose PDRs are main dining area, we made them as a single independent architecture and applied unique façade on each of them. To be used as a semi-closed PDR, water-rippled glass bricks are applied on the separation for certain privacy and openness at the same time. The warm color and material used in this fire-themed PDR. The add-shape-polar brick, on the back wall of the sushi counter, represents the light reflection on the water and creates a symbolic scene. By means of the Kumiko-like wood screen in front, the multiple-layers create a sense of depth and privacy for customers. By making slits between a cloak, display and walls, it is achieved to reduce the feeling of pressure.





"Nou" stage-imitated platform was established in the courtyard in the hotel. The different themed PDRs are dimly lightened up.

JAPANESE RESTAURANT by HILTON

希爾頓酒店 常州杉木日料

2024 completed 完成

Type 类型類型: Restaurant 餐廳

Location 地址: C'hang'zhou China 希爾頓酒店, 常州

Size 總面積: 457 m²

Concept Design to Site Supervision and logo design 概念設計與現場設計管理





Ran hotpot / Sushi Zen

燃鍋料理 / 鮭然

2019 completed 完成

Type 類型 : Restaurant 餐廳

Location 地址 : Beijing, China 朝陽區, 北京

Size 總面積 : 474m²

Concept Design to Site Supervision 概念設計與現場設計管理

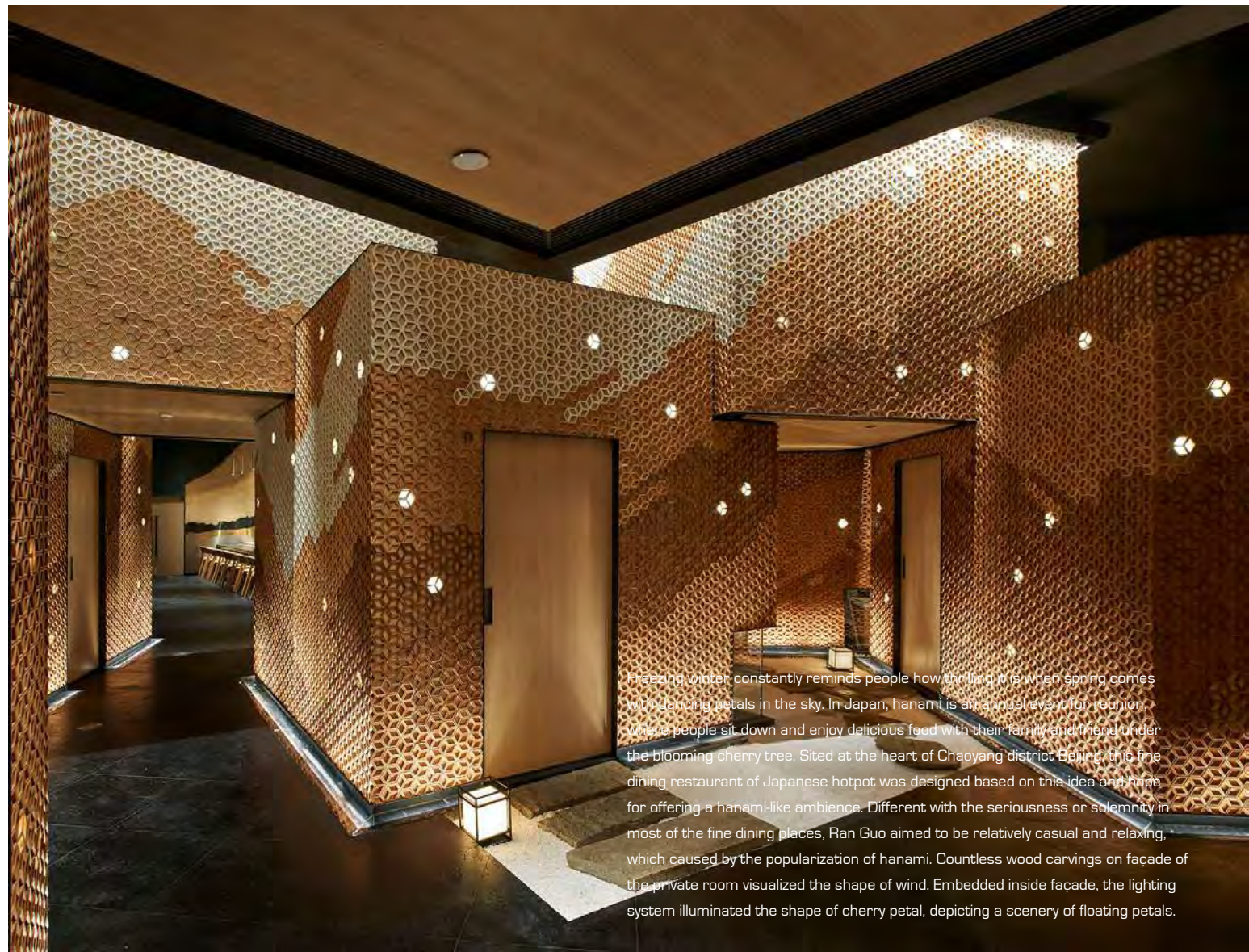
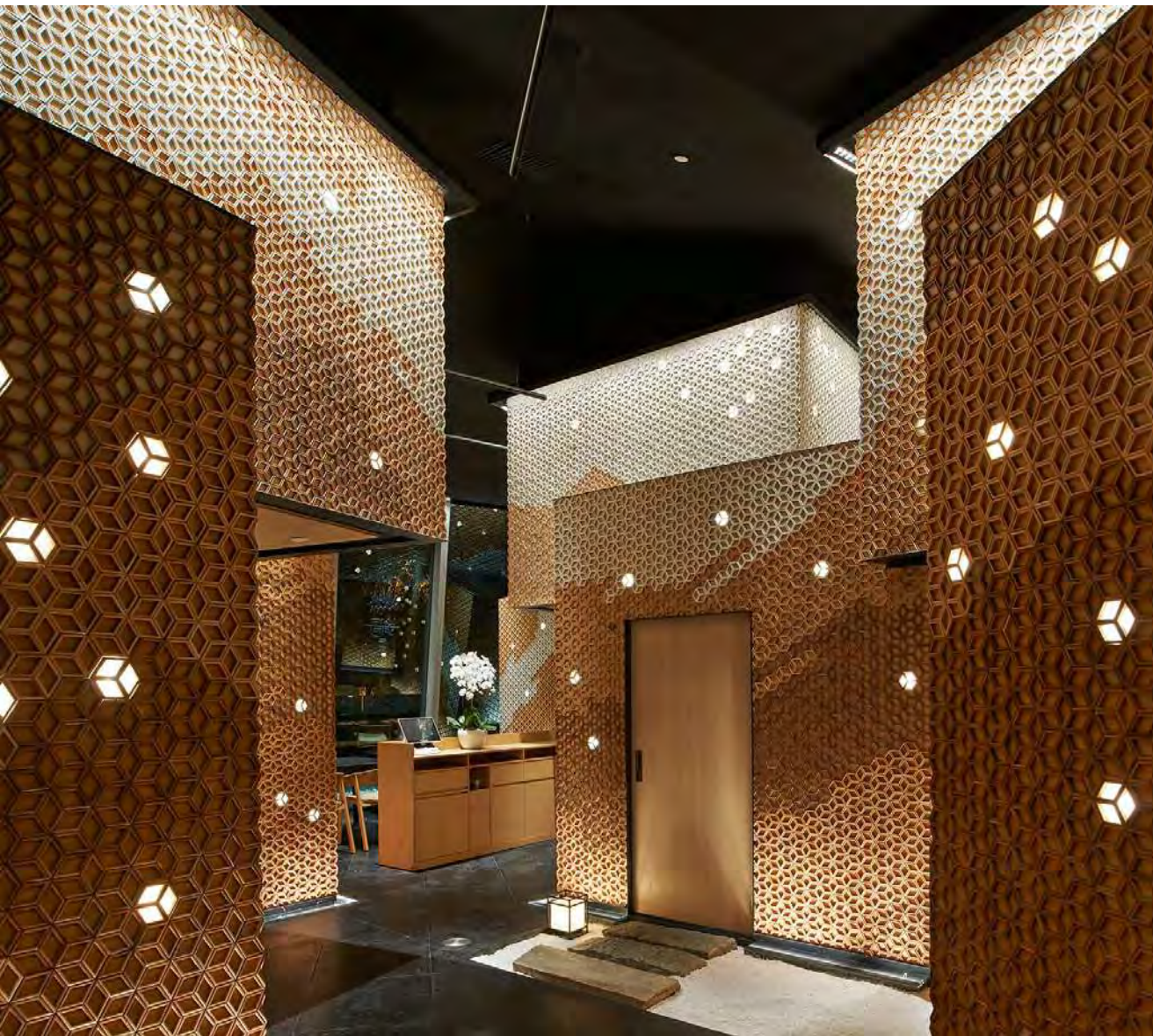
Space Photo_Ruijing photo (廣松美佐江)

寒冷的冬季使人們倍加期待春天到來時花瓣漫天飛舞的景色。在日本文化中，春天在起舞的花瓣下用餐是一年一度的重要活動，人們稱之為hanami（花見）。這家位于北京朝陽區核心位置的高級日式火鍋餐廳就以此為基礎，希望借由設計營造出席坐花下的氛圍。與隨處可見的高級料理店內嚴肅莊重的氣氛不同，以hanami為概念設計的燃鍋的氛圍更為輕鬆隨意，這也和hanami本身十分大衆化有關。包間外立面用無數木雕刻具化風的形態，木雕板內嵌有照明系統，將櫻花花瓣的形狀照亮，形成一幅櫻花飄散的畫面。

私人包間上，開放式廚房吧台和散座隨機散布在包間周圍。桌椅和置于包間入口處的微型花園穿插于包間的空隙中，以此來保證散桌客人用餐時的私密性。此外，有效利用挑高8米的天花，將其一分為二成上下兩個方盒，下部為包間，上部空間隱藏了公共區域及包間的空調、通風設備，而插座則安裝在較低的位置。

盡管空間中散落著很多盒子樣的體塊，它們緊湊且連續，遠觀十分有壓迫感，但通過縮小空間內其他元素的尺度，在邁入內部後，實現帶來如漫步日本小巷一樣的親切感。衷心希望每一位前來用餐的客人都能在這個空間中享受在花下用餐的美妙體驗。





Freezing winter constantly reminds people how thrilling it is when spring comes with dancing petals in the sky. In Japan, hanami is an annual event for reunion, where people sit down and enjoy delicious food with their family and friend under the blooming cherry tree. Sited at the heart of Chaoyang district Beijing, this fine dining restaurant of Japanese hotpot was designed based on this idea and hope for offering a hanami-like ambience. Different with the seriousness or solemnity in most of the fine dining places, Ran Guo aimed to be relatively casual and relaxing, which caused by the popularization of hanami. Countless wood carvings on façade of the private room visualized the shape of wind. Embedded inside façade, the lighting system illuminated the shape of cherry petal, depicting a scenery of floating petals.

XIYUANJU

玺源居 餐廳

2024 completed 完成

Type 類型: Restaurant 餐廳

Location 地址: Beijing, China 朝陽區, 北京

Size 總面積: 1600m²

Concept Design to Site Supervision 概念設計與現場設計管理





Sora Japanese restaurant

萬豪酒店宙餐廳

2019 completed 完成

Type 類型 : Restaurant 餐厅餐廳

Location 地址 :Nanjing, China 江甯區景楓萬豪酒店一層, 南京

Size 總面積 : 550 m²

Concept Design to Site Supervision and logo design 概念設計與現場設計管理

SORA is a high-end Japanese restaurant designed by odd. This project is located on the first floor of the Marriott Nanjing South Hotel in Jiangsu. The whole space is divided into several different private rooms. It consists of two 8-Person Sushi Rooms, two 6-Person Tatami Rooms, one 8-Person Dining Room, three 2-Person Dining Rooms, and our special Whisky Bar. Our design team set out to create different highlights in each individual space, letting each space become independent yet unified in the same overall atmosphere. Rooms are separated by traditional Japanese dry landscaping (Karesansui). It enriches the interaction between the interior and exterior of the space. Each room has a viewing window to create a chic dining experience for guests.

Although the central color of this space is black, the overall atmosphere is not dull nor dark, as our design uses rich materials and beautiful lighting. The soft lighting in the lobby extends from the walls on both sides to the ceiling, and the soft light fills all the space. Most walls in the public area are exquisite carved wooden fretwork lattices styled after patterns of the Japanese Edo period, which forms a dynamic picture. Taking advantage of the height of the space, some latticework is staggered above the water bar and the 2-Person Dining Rooms. The wooden lattice is decorated with a cloud and wave pattern, which makes the whole space more abundant. The natural rough masonry walls inside the space are in sharp contrast with the finely crafted wooden lattice.





宙•SORA是odd設計事務所設計的一個高檔日本料理店，項目位于江蘇南京市江甯區景楓萬豪酒店一層。空間使用均為包間形式，由兩間8人壽司包間，兩間6人榻榻米包間，一間8人包間，三間2人包間等組成，還包括一間私密的威士忌酒吧包間。設計師盡力于每個獨立空間中打造出不一樣的亮點，各個空間彼此獨立又統一于整體氛圍。包間之間以日式枯山水景觀分隔，豐富了空間的內外互動。每個包間配有單獨觀景窗口，給予客人別致的用餐感受。

這次設計的空間雖是以黑色為主基調，整體卻也不顯沈悶，主要得益于設計師採用了豐富的用材和合理的燈光設計。大堂軟膜燈光由兩側牆體延伸至天花，柔和的光線灑滿整個空間。公共區域牆體大部分為精致的鏤空木雕花格，整體花格以日本江戶時期雲海為素材圖案，排列形成一幅靈動的畫面。利用空間的高度優勢，水吧台與兩人包間上方錯落排布懸空盒子，表面賦予木質木花格雲海般波瀾壯闊圖案，讓整體更加豐富，靈動。空間內部天然粗糙的毛石牆面與精工細作的木花格形成顯著的對比。

RURI KAISEKI RYORI/JAPANESE CUISINE

瑠璃・懷石料理餐廳

2021 completed 完成

Type 類型: Restaurant 餐廳

Location 地址: Chengdu, China 成都

Size 總面積: 660m²

Concept Design to Site Supervision 概念設計與現場設計管理

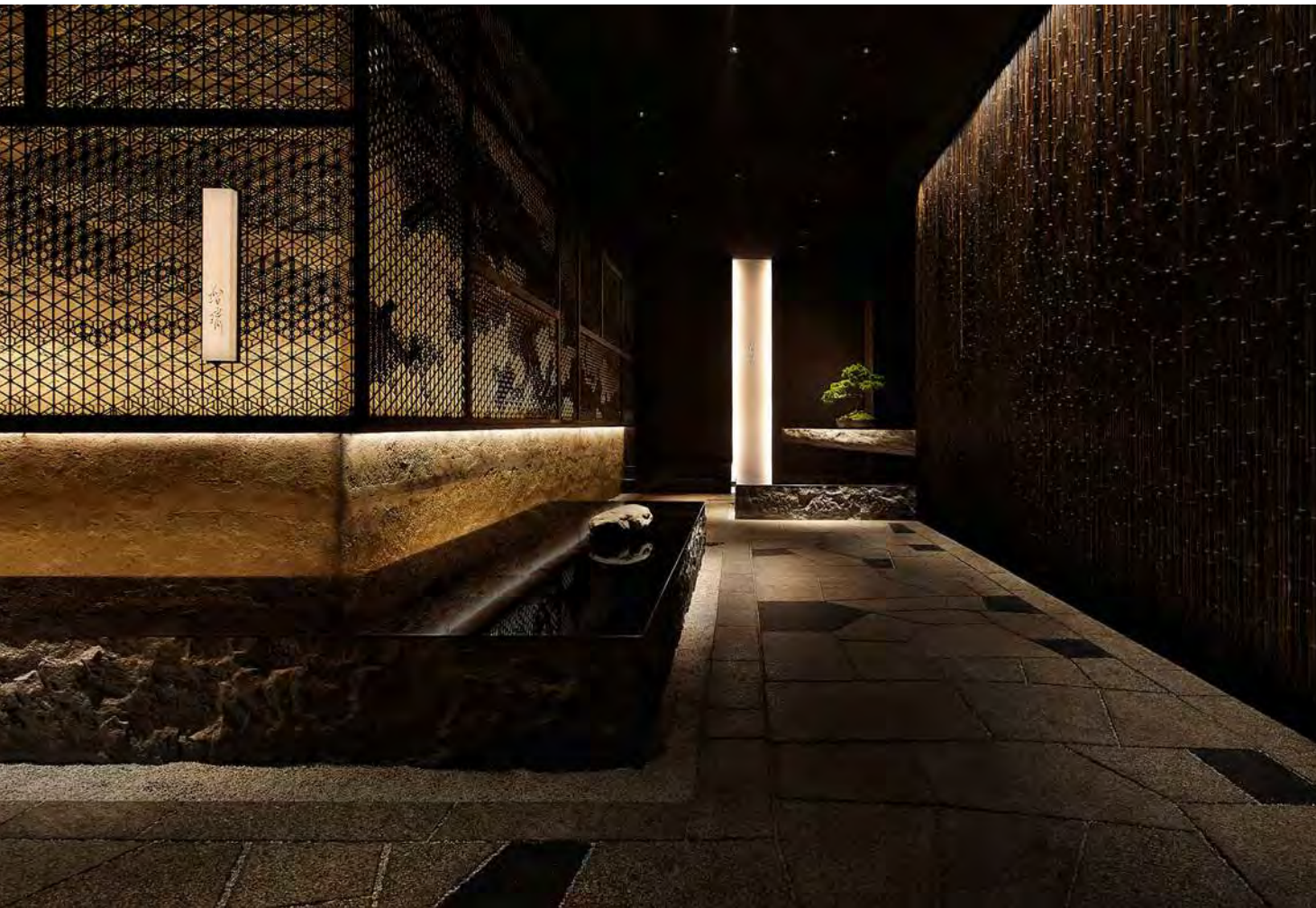
Space Photo_Ruijing photo (廣松美佐江/宋昱明)

成都設計一家高級懷石料理餐廳，餐廳名為“瑠璃”。

懷石料理沿襲于禪道發展而來，追求極致表達食材本身，尊重自然，表現自然。而禪宗佛教自中國傳入日本，有著悠遠的曆史，遠可追溯至盛唐時期，中日之間由此產生密切的交流聯系。作為佛教寶物之一，明澈的瑠璃寄托了人們的美好願景。在這樣的背景下，設計更突出材料的真實感，采用傳統制法與現代工藝結合的施工技藝，將場景營造為現實與曆史交織的時空，“瑠璃”是這夜空中灑下的熠熠光輝，希望能為來訪的賓客制造一場與自然交感，與食材交感的美好邂逅。

踏上餐廳入口，映入眼簾的立面是由日本傳統的木工工藝——精細的雲紋組子細工為表面飾面，底牆則為手工夯土牆面，敦實，強調砂石的顆粒感，兩者形成鮮明對比，愈顯肅穆莊重。入口通道一側則由炭化竹子飾面，漫步其中有漸入竹林深處之感。

從餐廳入口開始，一路錯落鋪就板石小徑。砂石敷沙代表水，石立其間代表山，其間飾以青苔。信步而作的枯山水庭園，沿著板式小徑，穿梭于前廳、料理區及錯落的獨立包間之間。賓客可沿曲折婉轉的路徑，感受沿途不同的景致體驗，抵達就餐區。





日本食文化的美離不開對茶道文化的詮釋。于是在用餐區的必經之處，以完全現代的做法詮釋日本傳統茶室，設計了一座浮于枯山水庭園上的光的茶座，敘說茶道與琉璃光影的對話篇章。賓客置身其中，可靜思自省，探索景觀。

透過特制的和紙窗格立面，光影隨時光流動如琉璃的光。隨時間推移，由明亮日光轉變成柔和的月光。賓客伴著月光，踏上歸途。

就餐包間私密，井然有序地散布在空間的四周。包間對應原有的場地外界，自然形成的不規則區域正好成為每個包間的獨立景觀空間，根據各個包間的設計風格，餐廳主理人與設計師共同完成庭院小景。賓客在就餐之余，可感受不同的景致意趣，或極簡侘寂，或枯淡靜穆，或碎石嶙峋，水聲潺潺。

花器、藝術品及容器等裝飾陳設均經過悉心甄選，貼合每個空間的不同氣質，呈現精巧別致的日式美學。





希冀美好祝願的”水上燈”向兩端無限延申。

通過幽靜長廊，步入另一條廊道。一面是精細的雲紋組子細工花格板，代表日本傳統技藝；另一面是自上而下的天然花崗岩石板，自然富有張力，隱喻蜀地多山的在地特色。

KOTO JAPANESE

事 日本料理

2023 completed

Type 類型 : Restaurant 餐廳

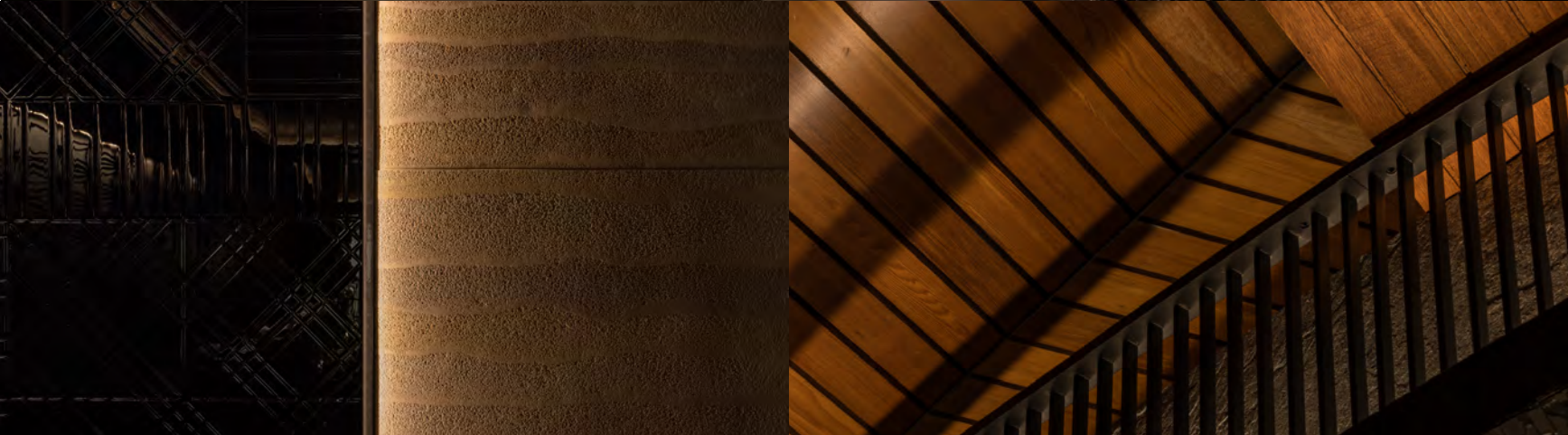
Location 地址: King George Terrace, The National Triangle, Canberra Australia 肯貝拉, 澳大利亞

Size 總面積 : 338m²

Concept Design to Site Supervision 概念設計與現場設計管理







SUSHI ZEN SINGAPORE

鮨然

2023 completed 完成

Type 類型: Restaurant 餐廳

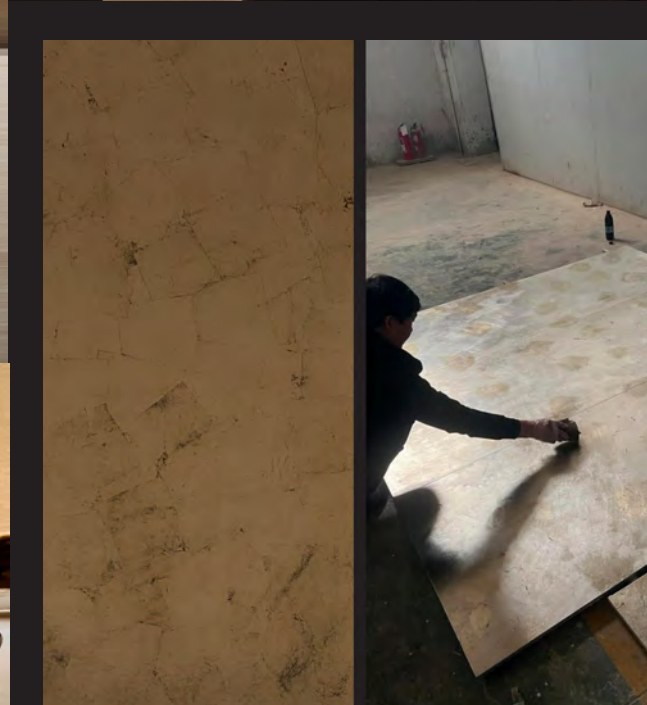
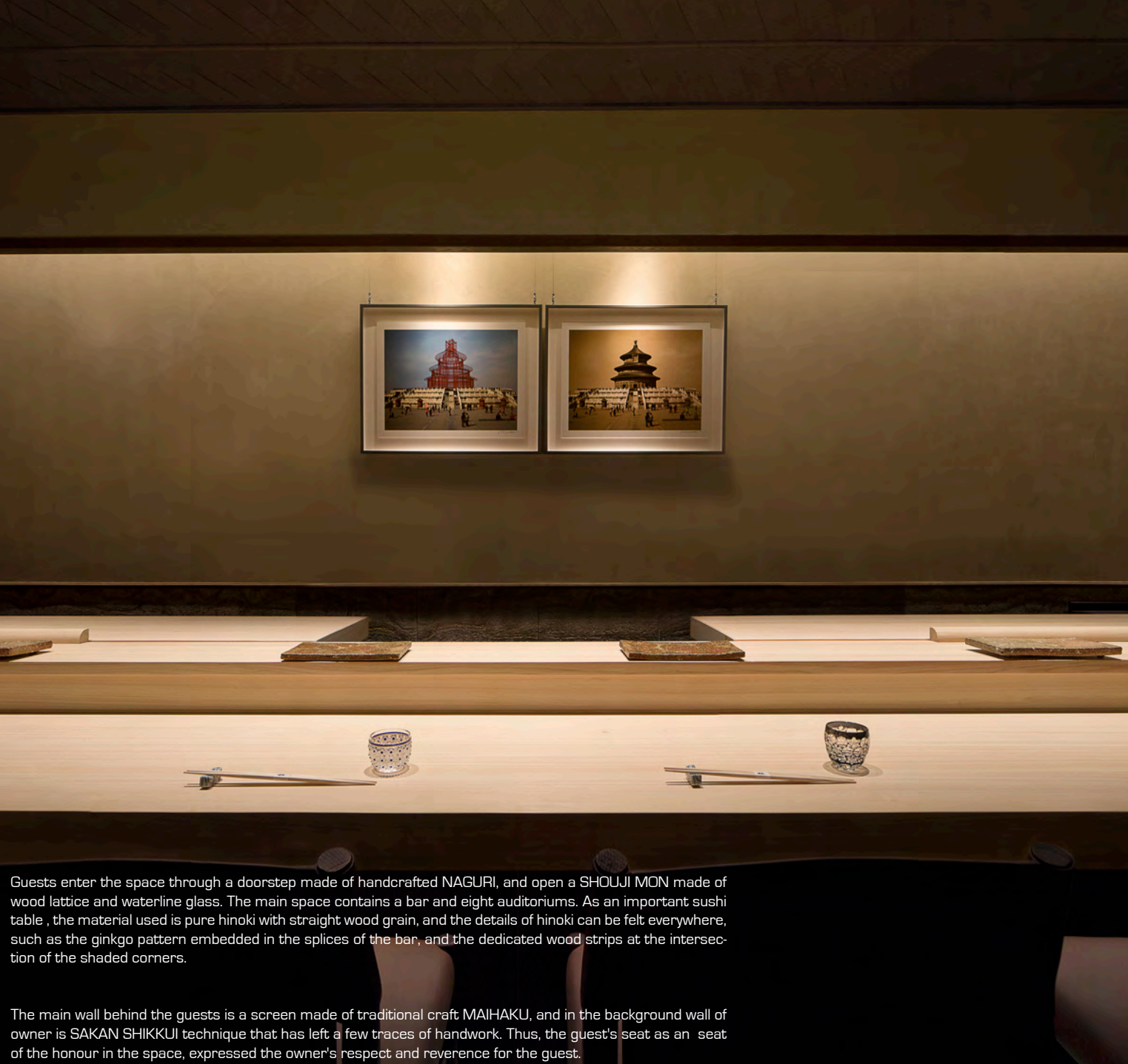
Location 地址: Singapore 鮨然, 新加坡

Size 總面積: 90 m²

Concept Design to Site Supervision and logo design 概念設計與現場設計管理



SUSHI ZEN is a place that serves food at special times, and as a space for Japanese culinary art, invokes Japanese spatial practices in the context of Singapore to create a secluded atmosphere away from the noisy city. This is what we have been thinking about during the design process. This is a space created with the aim of feeling the texture of the "hand" and the "life" of the material, by keeping the boundaries of time and culture between the tradition and the future. This is a space with a completely different feeling than the artificial perfectionist space made with intellectualized industry.



Guests enter the space through a doorstep made of handcrafted NAGURI, and open a SHOUJI MON made of wood lattice and waterline glass. The main space contains a bar and eight auditoriums. As an important sushi table, the material used is pure hinoki with straight wood grain, and the details of hinoki can be felt everywhere, such as the ginkgo pattern embedded in the splices of the bar, and the dedicated wood strips at the intersection of the shaded corners.

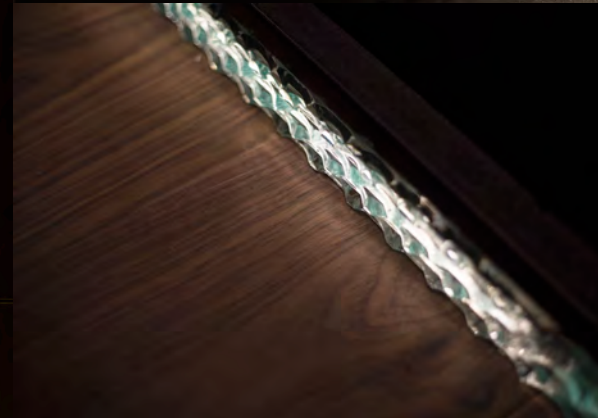
The main wall behind the guests is a screen made of traditional craft MAIHAKU, and in the background wall of owner is SAKAN SHIKKUI technique that has left a few traces of handwork. Thus, the guest's seat as an seat of the honour in the space, expressed the owner's respect and reverence for the guest.



The SUKIYA style pillars around the corner were adopted from the pillars of old houses that had been used in the past. For pillars that are flaking and too corrupt to be used directly, they are filled with handmade glass to bring them to new life, attempting to combine materials that have passed through time with modern materials.

Transparent heterogeneous materials such as specially customized glass tiles are configured in the TSUKAISHI and SASHIISHI sections to achieve a fusion of tradition and modernity. Hand-carved cascading glass on the skirting under the bar reflects light onto the floor like water.

Most of the material involved this time cannot be represented in regular drawings, so we have been in conversation with a wide variety of craftsmen. Unlike the rise of artificial intelligence, systematic construction methods, and ready-made products, these conversations seem unreasonable in the modern era, but we try to reconnect with the emotional space that has been gradually lost due to homogenized architecture. The cuisine and utensils offered in this space become one with the building, and the natural materials produced by the handwork and the resulting shadows share the space symbiotically.



Enkitsu Omakase Japanese Restaurant

炎橘板前日料

2021 completed 完成

Type 類型 : Restaurant 餐廳

Location 地址 : Changhsa China 長沙北辰國荟酒店, 長沙

Size 總面積: 315 m²

Concept Design to Site Supervision and logo design 概念設計與現場設計管理



Ennkitu Omakase Restaurant-A hidden habitat high above the city: a simple and elegant Japanese dining space with traditional materials. Ennkitu Omakase Restaurant is located on the 39th floor of the top floor of Changsha North Star International Hotel, the restaurant is situated in the Beichen delta, high above the city, with wonderful views overlooking the Juzizhou and intersection of the Xiangjiang River and the Liu Yang River. The client decides to open the restaurant as a Kappo Ryori restaurant, with hold aperiodicity sake banquet. The itamae dining area is naturally the focal point of the interior.

The restaurant consists of the itamae dining area, six private rooms and an outdoor terrace of almost 100 m². The overall interior is decorated in simple natural style, with filtering unnecessary construction methods and unify the decoration style. The main decorative surfaces are made up of raw timber, bamboo and continuous rammed earth walls, accented by handmade Kumiko and rough stones. The natural grain of the rammed earth and stone surfaces contrasts with the warm wood grain, finding a balance between modernity and tradition of Japan, echoing the natural flavours of Japanese cuisine with original colours and traditional craftsmanship.





OOTOKU SUSHI

大德會席

2017 completed 完成

Type 類型: Restaurant 餐廳

Location 地址: TAIKOOLI, Chengdu, China 成都遠洋太古裏, 中國

Size 總面積: 150 m²

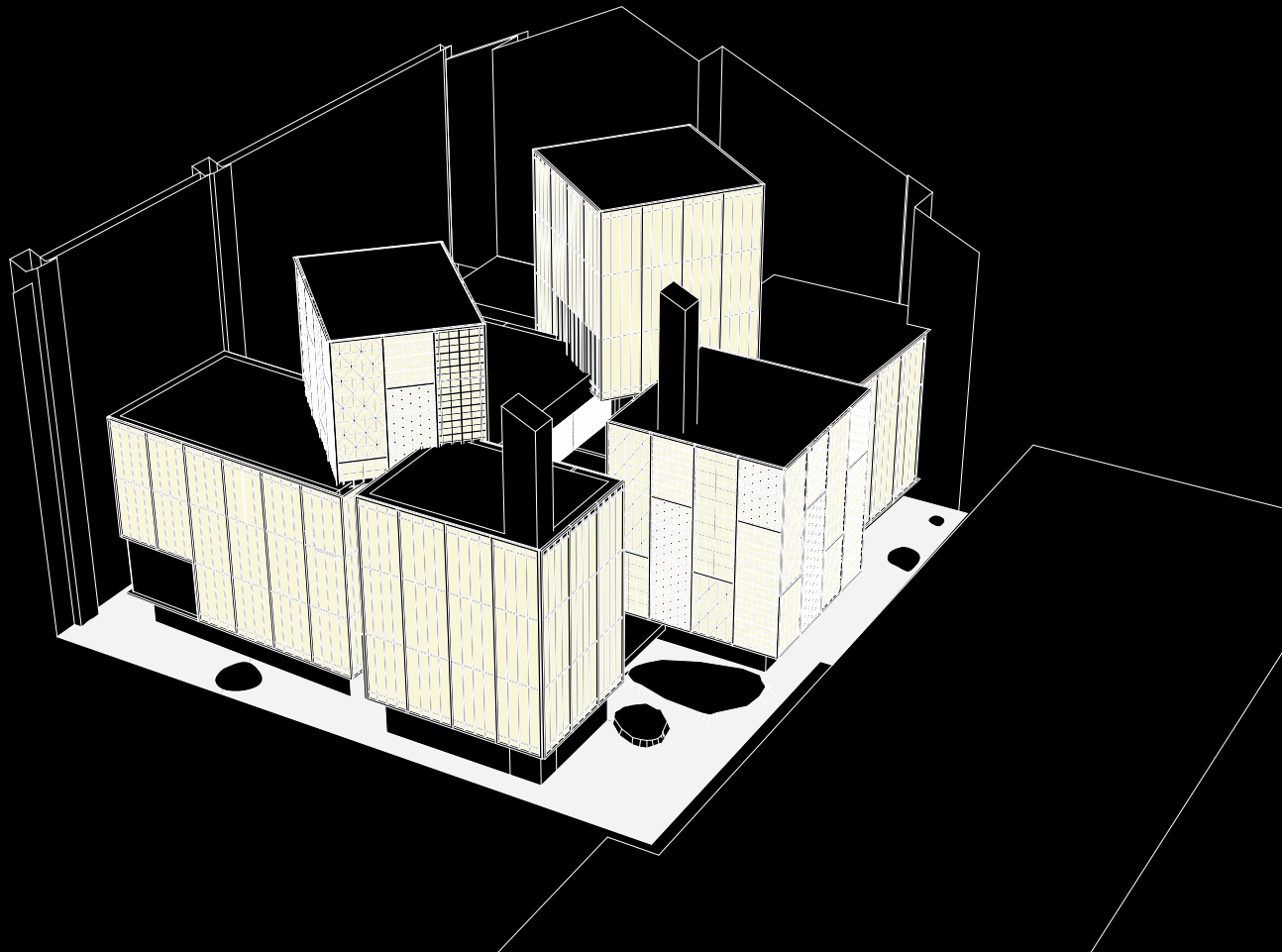
Concept Design to Site Supervision and logo design

概念設計與現場設計管理



OOTOKU is a premium Sushi restaurant in the downtown area of Chengdu. It is located on the second floor of the most luxury shopping mall, Sino-Ocean Taikoo Li. In this maximum 8-meter ceiling height, six cubes are designed with the form of Japanese traditional lantern, which creates different functional space. The inside space of the box is for the private dining room, The outside space naturally forms corridors and Japanese-style landscape walkway. The base of the boxes is above the ground, giving a feeling of suspended lantern. Dimmed lighting effect from Japanese paper and different kinds of wooden patterns

attract guests from the public corridor and let them feel quiet and cozy. Each booth has a glass window in the lower part, guests could see the Japanese-style garden through it, which builds an interaction between the outside and inside. Sushi-bar design is quite simple, using a big solid wood to retain the most nature status, without excess decoration. Behind the bar, the wall is decorated with a whole surge pattern marble, showing a strong vitality of fishermen and sushi chefs.



Ootoku Chang-An Japanese BBQ restaurant 大德・長安

2019 completed 完成

Type 類型: Restaurant 餐廳

Location 地址: Beijing, China 銀泰, 北京

Size 總面積: 220 m²

Concept Design to Site Supervision and logo design 概念設計與現場設計管理

OOTOKU CHANG-AN is a high-end Japanese-style BBQ restaurant. This project is located at GUOMAO CBD area in Beijing. The place is faced to CHANG-AN JIE; one of the most important city boulevards of Beijing City. CHANG-AN is the old name of Xian, the capital of Sui dynasty; when Japan sent missions to China in order to study advanced Chinese culture and social institution in Asuka and Nara era; the 7-9th century. At that time, Horyu-ji temple was built, which is widely known as the existing oldest wooden structural architecture in the world. The design inspiration comes from China-Japan old cultural relationship.

Establishing a single pitch-roofing house with five private rooms standing in the Zen garden and facing to Chang An JIE is the concept of this restaurant. A building is covered by wooden louvers to keep certain privacy of dining space and the view to the heart of CBD. Elevated floor from Zen garden makes not only space for tatami seat but also help to create sight gap between the guests walking in garden and in the private room. Glass ceiling is applied to let guests perceive wood-stuck roof of this architecture during the dining.





Daimu Japanese BBQ restaurant

大無焼肉

2021 completed 完成

Type 類型 : Restaurant 餐廳

Location 地址 : Shanghai China 港彙廣場, 上海

Size 總面積 : 540 m²

Concept Design to Site Supervision and logo design 概念設計與現場設計管理

The restaurant is located at Shanghai Hang Lung Plaza, which is a busy shopping area in Shanghai. The design of the restaurant is based on deep black color, integrating the concept of "nokishitakuukan" in traditional Japanese architecture and gardening into the interior. By using landscape scenery and simple spatial aesthetics, the designer create a cozy and comfortable dining atmosphere in a modern downtown, creating a unique modern dining space with traditional elements.



When evening comes, a quiet and elegant Japanese restaurant is waiting for guests in the bustling city under the deep night sky. At first sight, the open front design of "DAIMU" attracts special attention. Throughout the whole restaurant, the simple and natural feeling is the first thing that designer wants to convey to the guests. The "L" shaped eave give the restaurant a unique concept of "indoor, outdoor and semi-outdoor".



The classical garden scenery and the dry landscape on the ceiling echo mutually, making the interior style break through the tradition style and more ornamentally. The dark color of the main tone with a little light makes the overall feeling more calm and mysterious.



The black figure grooved stone wall is embellished with copper grille to enhance the sense of reality. Through the copper grille, the evenly distributed lines disperse the soft light from the surrounding landscape and lanterns, presenting a hazy and picture squee visual effect that making the space more layered and have artistic concept. The "semi-outdoor" dining area under the eaves is divided from the mall corridor by the landscape cleverly.





In order to meet the dining needs of different guests, the designer plans a sufficient number of private rooms. In contrast to the semi-indoor public dining space under the eaves, the designer defined the private rooms as separate indoor spaces under the eaves.

The black lava stone and black rubble stone with silver-plated glass tile wall are cattered and unique. The water ripple glass tiles look extra light in the heavy stone, the strong contrast makes the interior unforgettably.

Han

涵

2019 completed 完成

Type 類型 : Restaurant 餐廳

Location 地址 : Beijing, China 朝陽區, 北京

Size 總面積 : 226 m²

Concept Design to Site Supervision 概念設計與現場設計管理

Space Photo_Ruijing photo (廣松美佐江)







BARISTAR CAFE

BARISTAR 咖啡

2023 completed 完成

Type 類型 : Cafe 咖啡廳

Location 地址 : Wuhan China BARISTAR 咖啡, 武汉

Size 總面積 : 185 m²

Concept Design to Site Supervision and logo design 概念設計與現場設計管理

The idea of "environmental protection" was born not on a whim, but as a result of deep thinking in the face of resource depletion. Most commercial spaces are a compound of various resource consumption. We wanted to use more eco-friendly materials to reduce consumption and make the space more aesthetic. Through this active use of common fundamental materials, reducing construction period, rather than ending up as a lifespan of previous environmentally burdensome products, the aim is to innovate with a spatial design that is characterized by new assembling method.





The concept of the coffee brand BARISTAR is to set the stage for baristas to be the leading actors on stage. A space where baristas can meet, share and interact with coffee lovers. The highlight of this design is the creative use of galvanized square steel pipe [modularization]. The same size of square steel is stacked and accumulated in the interior, through the interpolation and height change, square steel in different positions is used in various ways. The same steel block includes a table on one side and the other side can be turned into a seating area. Customers can chat, work, take their pets; a wide variety of guests, all free to choose indoors or outdoors, connecting spaces through their action, creating a place to interact more.

CHI RESTAURANT

CHI 餐廳

2013 completed 完成

Type 類型 : Restaurant 餐廳

Location 地址 : Beijing, China 五道營胡同, 北京

Size 總面積 : 60 m²

Concept Design to Site Supervision and logo design 概念設計與現場設計管理, LOGO設計



While located in the heart of Beijing , the bistro is opened on the district which has grown slowly, apart from a large-scale development of capital city of China. This area was originally a residential area of Hutong. Nowadays, it has turned into a small-scale cafe street to leave the atmosphere of the old Hutong . We were assigned to design the extraordinary restaurant for serving the talented self-taught chef's foods.

To such a location, we collected old Hutong materials such as anonymous window frames and old woods to construct the main function of the restaurant. On the other hand, we painted white for existing wall and ceiling. Briefly, we made new objects with old recycled material, and renewed the original existing spatial structure with white paint. This juxtaposition of two reorganizing

processes of materials gives gourmets different sensitivity from normal vintage-style restaurant. We identified this concept with their unusual cross-border cuisine food, served in the restaurant.

While this 60 square-meter space is mainly prepared for open kitchen bistro, two 3.2-meter flexible walls are able to realize three different spaces according to the way to use. In addition to the normal use, the open kitchen is completely hidden , and the space is used for private parties by closing two walls. Half-closed walls divides it into three triangular small spaces, which is suitable to temporary small exhibition. Furthermore, the mirrors applied on the walls creates the visual depth of the space and gives people different spatial experience according to walls' position.



CHI 餐廳是遠離北京其他地方的大規模開發的位于老城區胡同裏的一家餐館。近年來，在北京可以見到不少高度商業化的胡同。這家餐館所在的街區，是個開了很多個人店的胡同，這些店的老板們大多因為個人興趣而開店。在這次的設計中，除了要考慮餐廳本身的屬性，還要兼具在餐廳內舉辦個展或是其他活動的功能。

在餐廳內，還有一個全長 6.4 米的可折疊的可移動牆壁。在完全打開的狀態下，可以作為擁有開放式廚房的餐廳門來用，在完全閉合的狀態下，又可以將開放式廚房隱藏起來，讓整個餐廳變成一間大房間，而在半開的狀態下，它將餐廳區劃分出三個空間，可作為展示作品的牆壁，創造出了能夠靈活布置的空間。

由于該餐廳提供多種風格的食物，因此，為了營造出不同于普通胡同餐廳的別樣感覺，我們收集了周邊的拆遷胡同中淘汰的廢舊建材，這其中就包括老舊的窗框，通過精心設計組合出新的胡同味道。另一方面，我們還為這個建築的柱子和大梁重新刷了白漆，營造出無機的感覺，也就有了既保留了胡同原本的樸素感，又同時具有新鮮感的餐廳。





HE KITCHEN&CO.

HE 餐廳

2016 completed 完成

Type 類型: Restaurant 餐厅

Location 地址: Beijing, China 五道營胡同, 北京

Size 總面積: 113 m²

Concept Design to Site Supervision and logo design 概念設計與現場設計管理, LOGO設計

Photo_Ruijing photo (廣松美佐江)

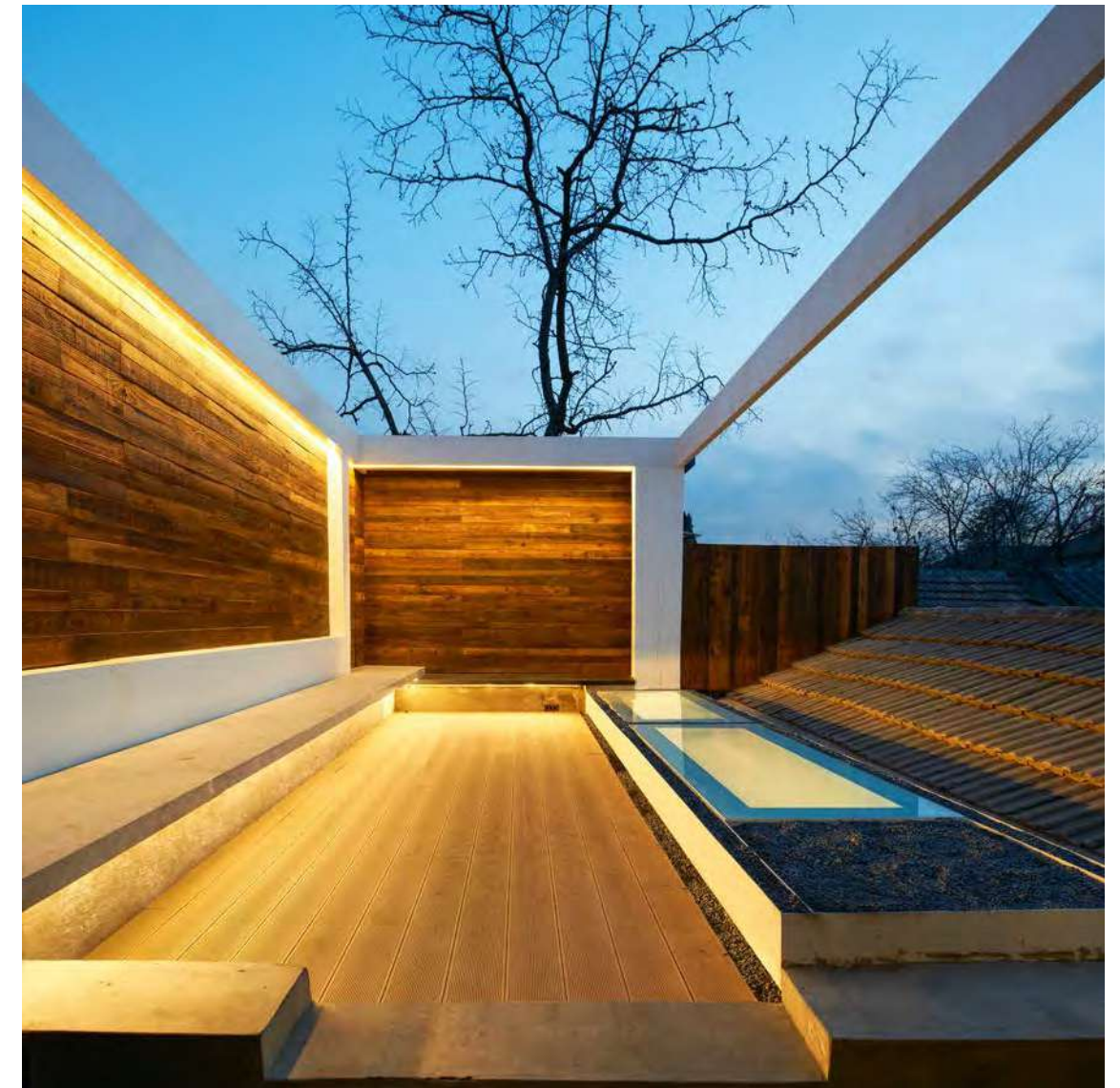


這裏位於離國子監不遠的五道營胡同，身處曆史保護街區胡同的中心位置。出于對新舊事物間關係的思考，設計師在改造過程中更加注意對材料的應用，保留原青磚外牆和室內部分結構柱，加入溫暖自然的木材和酷感十足的水泥及鋼板，刻畫不同材料的質感，產生空間視覺上的碰撞。吧台處黑白人字紋瓷磚的運用，極具裝飾感，對比強烈，空間更顯活潑跳躍。地面鐵板與鐵質樓梯相連，繼而延伸上二層，強調空間的連貫性，對客人動線也起了一定的引導作用。

HE is located on Wu Daoying Hutong, which is near the Guozijian, at the center of historical protection of Hutong Group. Thinking about the relationship of new and old objects, designers paid more attention on the application of materials. The original gray brick walls and part of the interior structure are retained, natural woods and cool cement and steel are added. Visual collision is created in this space by combining the texture of different materials. The black and white word pattern tiles on the bar are really decorative, the strong contrast makes the space more lively. The ground iron is connected with the iron staircase, then it extends to the second layer, emphasizing the coherence of the space. The connection also plays a guiding role for guests.







2016 completed 完成

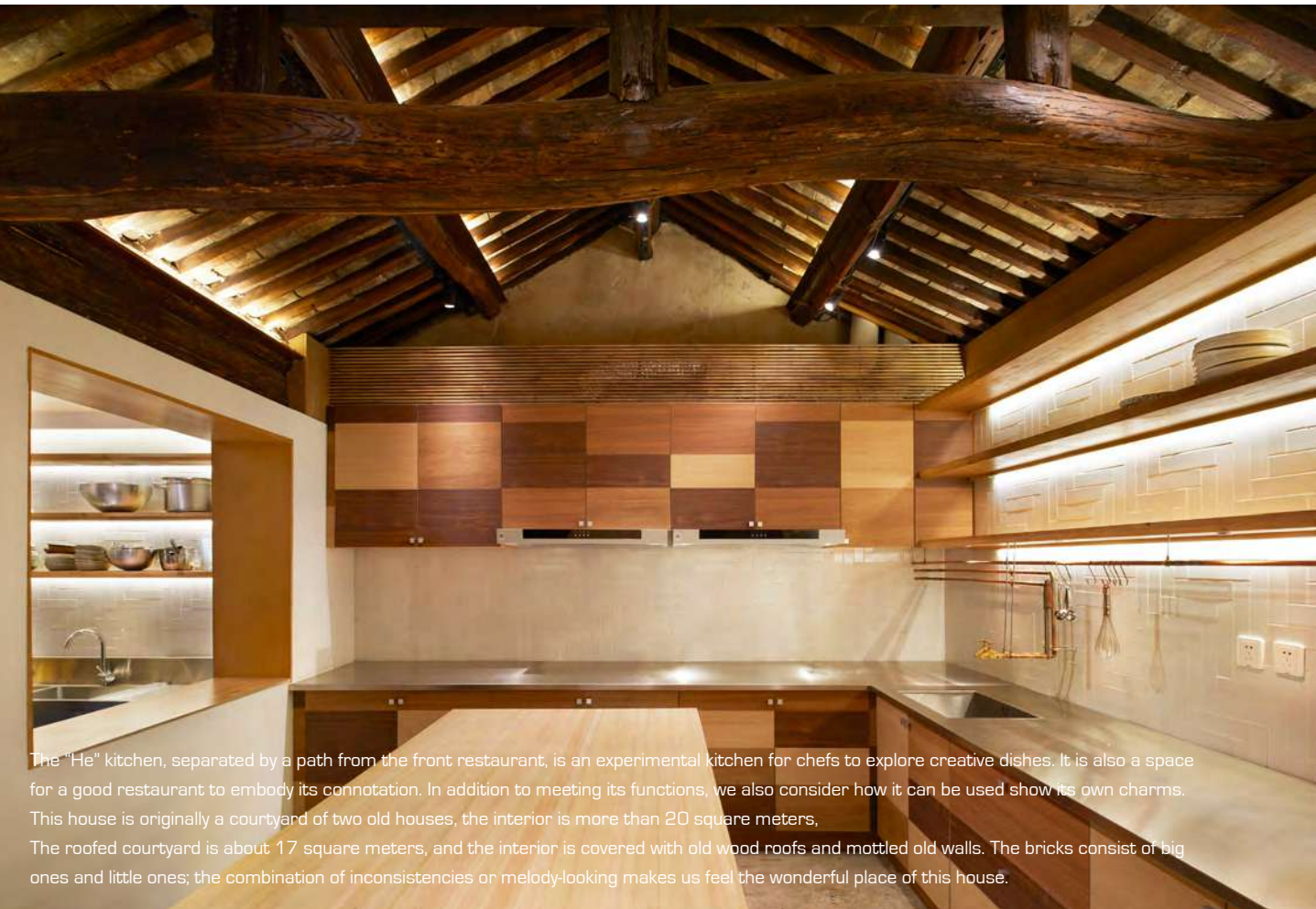
Type 類型 : Kitchen studio 廚房

Location 地址 : Beijing, China 五道營胡同, 北京

Size 總面積 : 45 m²

Concept Design to Site Supervision 概念設計與現場設計管理

Photo_Ruijing photo (廣松美佐江)



The "He" kitchen, separated by a path from the front restaurant, is an experimental kitchen for chefs to explore creative dishes. It is also a space for a good restaurant to embody its connotation. In addition to meeting its functions, we also consider how it can be used show its own charms. This house is originally a courtyard of two old houses, the interior is more than 20 square meters. The roofed courtyard is about 17 square meters, and the interior is covered with old wood roofs and mottled old walls. The bricks consist of big ones and little ones; the combination of inconsistencies or melody-looking makes us feel the wonderful place of this house.

與前面餐廳一條小徑之隔的“HE”的後廚是廚師們探討創意菜品的實驗廚房，後廚也是一個好餐廳體現其內涵的空間，在滿足功能之外，我們也斟酌了她怎樣才可以展現出自己的本色。這個房子本來就是一個四合院中的兩間老房子，室內20多平，封頂的院子17平左右，室內是老木頭的房頂和表面斑駁的老牆面，磚的大小都有些不一致，正是這樣的狀態反而更讓我們感受到這座房子的美妙的地方。

1. 洗碗間移門：進門左手邊是放置冰櫃的區域，對面是一個洗碗間，我們設計了一個半通透的隔斷，一半是實體隔斷牆一半是玻璃移門，不管是閉合或者開啓門和牆都可以完美的契合，洗碗間的西側和廚房操作台有一個傳遞碗盤的大窗戶，同時滿足了采光和功能的要求；
2. 天窗的設計：本來房子的采光不佳，與老房子連接的頂部設計了幾乎貫穿南北的磨砂玻璃材質的天窗，上下銜接設計，在二層露台也作花池方面的處理，已成了露台的景致；
3. 原牆面和房頂的保留設計：牆面和木質房頂悉數保留，只做清灰、防火、加固的處理，盡量保留本來的面貌。燈光設計也襯托出房子的質感，頂部的燈光由東西兩側向頂部打光，洗牆的燈帶也渲染突出了老磚牆的歲月感；
4. 紫銅管水龍頭：紫銅的粗犷而細膩的本色正與老房子的感覺相匹配，管道外露設計一來可以避免過多的破壞老牆面，也可以與老磚的斑駁相融合，平行折彎的水管也是雜亂與齊整的這對矛盾體完美結合，會給人眼前一亮的感覺



BOOTH'S CAKE

布司蛋糕

2017 completed 完成

Type 類型: Cafe 咖啡廳

Location 地址 : Gongti, Beijing 工體北路, 北京 中國

Size 總面積 : 500 m²

Concept Design to Site Supervision and logo design

概念設計與現場設計管理

Our clients hope that the overall space can bring customers unique visual experience and comfortable dining experience. Through the hustle and bustle of the industrial and Sports District, with gray texture exterior wall and green plant logo, this independent building is surrounded by the residential areas.

The appearance looks quite simple, modern and without sense of violations.

The whole space is divided into two floors. The first floor is the front hall and the back kitchen. The glass wall provides a panoramic view of the front room, attracting visitors to the shop. Gray as the main tone, the walls, the stainless steel channels with inclined planes, and the furniture in the seating area are all corresponding to the style. All of them highlight this clean and tidy, and even future sense space. The 9-meter-long display counter, meeting the needs of centralized display, has clear lines and no excessive decoration. Compared with the exquisite cake, it increasingly reflects the softness and delicacy of the cake.

odd建筑事务所受邀为BOOTH'S CAKE设计位于工体北路的新店。客户希望整体空间能带给客人独特的视觉感受和舒适的就餐体验。

穿过喧嚣的工体街区，这栋拥有灰色肌理外墙和草木绿LOGO的独立建筑，被包围在这一带居民区中，简洁现代却又无违和感。

整体空间分为上下两层。首层为前厅和后厨部分。落地玻璃墙使前厅一览无余，吸引路过客人入店一探究竟。灰色为主调，斜面穿插的墙体和不锈钢通道，与之风格呼应的座位区家具，均凸显出空间的干净利落及未来感。9米长的展示柜台，满足集中展示的需求，线条分明，没有过多的装饰，与制作精致的蛋糕形成对比，愈发映衬蛋糕的绵软和细腻。

二层就餐区注重客人的用餐感受，在灰色的基调上用木色来平衡空间的冷暖。通过不锈钢通道打通空间，使原本相对独立的三个空间之间产生联系又各具特点。因地制宜将窗户改造为嵌入式沙发座，为后期糕点课程准备的吧台亦可以是开放的就餐座位，原本低矮的过梁变身成为LOGO墙等，都是来源于设计师对细节处理的重视，从而能由简单的材料和灯光便搭配出丰富的空间效果。





Restaurant y

2017 completed 完成

Type 類型: Restaurant 餐廳

Location 地址: Beijing, China 三里屯太古里, 北京

Size 總面積: 300 m²

Concept Design to Site Supervision 概念設計與現場設計管理

Photo_Ruijing photo (廣松美佐江)



位于朝陽區的三里屯是北京最具個性與魅力的風尚地標。相比南區，北區的整體氣氛內斂奢華，呈現出大都會的優雅包容氣質。restaurant y 的設計概念是urban retreat restaurant and lounge。

大面積的無色彩材料，如灰色塗料，白色不鏽鋼，營造出低調沈穩的時尚風格。溫潤的木色與暖燈光為空間提供了舒適、愉悅的就餐空間。露台的黑色石材地面與帶有舒適面料的實木家具的結合則展現出放鬆、愜意的氛圍。

餐廳的就餐區一半室內，一半露台。室內的西側開放廚房超長的多功能吧台，以及東側與玻璃幕牆平行的咖啡吧台，拉絲不鏽鋼材質與周圍融為一體，多功能吧台上方極簡但不冷峻的吊架，及其食物、酒水與廚具的展示，都會讓客人與餐廳在不自覺間交流。客人就餐時看着大廚們在布滿六角小瓷磚牆面廚房有條不紊的忙碌，也不失為絕佳的就餐體驗。



室內與露台之間是多扇可中軸回轉的黑框玻璃門，在露台之間，玻璃上放大的食材藝術切片效果，給客人不一樣的感官體驗。進入滿園綠植的花園露台，兼具備餐台和座椅功能的柚木材質的花池，多款天然石材相同鋪地，62cm的桌子搭配39cm的皮質軟包休閒椅，整个人躺上面，開始一天的舒暢生活。

Sanlitun is Beijing's most personalized and attractive landmark located in Chaoyang District. Compared to the Southern District, the atmosphere of the North restrains luxury, showing the elegance and inclusiveness of the city.

The design concept of Restaurant Y is urban retreat restaurant and lounge. Large areas of achromatic color materials, such as gray paint and white stainless steel, were used to create a low-key calm fashion style. In addition to warm wood, the lighting produce the comfortable and pleasant dining space.

Between the interior and the terrace, there are many glass doors with the art of enlarged slicing which brings customers different sensory experience. Into the garden terrace with plants and flowers, customers could see a flower pond that could be used both as the dining table and seats. A variety of natural black stones are used in the ground. The combination of the stone floor with solid wood furniture covered by comfortable fabrics shows a relaxed and cozy atmosphere.



Oyster talks

四度蚝

2020 completed

完成

Type 類型 : restaurant

餐廳

Location 地址 : Beijing Yinke Center

北京盈科中心

Size 总總面積: 260m²

Concept Design to Site Supervision

概念設計與現場設計管理



Previously, oyster talks's interior adopted European classical style. After relocation, the upgraded store mainly focuses on dark tune, and the utilization of modern style brings customers a different experience from the past. This is also the renewal of oyster talks's own cognition.

The facade of the restaurant consists of two parts, the sloping awning and the glass door. The slanted awning is different from the traditional; the simple geometric shape plays the role of rain shelter and makes the whole shape of the facade more attractive. Through the transparent door, the slanted awning is integrated with the interior dark-color wall inside, breaking the estrangement brought by the glass door. Standing outside the restaurant, you can also feel the visual impact brought by the interior atmosphere. The strong contrast between the copper-colored pick out shape and the dark

interior space also makes the whole entrance particularly eye-catching.

Inside the restaurant, the oyster bar stands at the entrance. A variety of sea food products are displayed on the bar. 8 spot lights show the gloss of fresh oysters on the bar, makes it very delicious and attractive. The round island design of the bar makes the bar area become a must-see spot for guests after entering the restaurant for the first time. This idea ensures that guests can effectively understand the specialty of restaurant and can see at a glance the freshness of the dishes. The facade of the bar is made of hand-crafted copper with the hammer texture on the copper plate echoes the natural grain on the surface of the shell. The combination of stainless steel and stone on the bar top creates a stark contrast with the copper base, and the understated luxury does not take away from the highlights of the seafood products.

之前餐廳整體採用歐式古典風格，此次搬遷後升級店面以深色調為主，使用現代風格希望能給顧客帶來與過去不一樣的體驗，這也是 Oyster talks 四度蚝餐廳對自身認知的更新。

餐廳外立面由斜面遮雨棚與玻璃門兩大部分組成。斜面遮雨棚與傳統遮雨棚不同，簡單的幾何形狀起到了遮雨的作用，也讓外立面整體形體更為美觀。透過玻璃門，斜面遮雨棚與室內深色牆體融為一體，打破了玻璃門帶來的隔閡感，站在餐廳外也能感受到內部深藍色牆體帶來的視覺沖擊。銅色的挑出造型與深藍色的室內空間帶來的強烈對比也讓整個入口顯得格外引人注目。

走進餐廳內部，象征著 Oyster talks 四度蚝品牌文化的生蚝吧台伫立于入口處。吧台上展示著豐富多樣的海鮮產品，8盞射燈將吧台上新鮮生蚝的光澤表現得十分鮮美誘人。吧台採用了環島式設計，使得吧台區域成為客人初入餐廳後的必經之處。這樣設計能確保客人高效地了解餐廳招牌菜品種類，更能一目了然地知曉菜品的新鮮程度。吧台立面由純手工打造的銅板面制成，銅板上的錘紋肌理呼應貝殼表面自然紋路。吧台台面使用不鏽鋼和石材，兩種材料的結合既能跟銅板底座產生鮮明的對比，低調奢華的氣質也不會奪走屬於海鮮產品的亮點。





ODD. Design & Build

HK.

Architecture



Xu Zhou Sales Center

徐州星宿城市公寓售樓處

2018 completed 完成

Type 類型: sales center 售樓處

Location 地址: Xu Zhou, CHINA 徐州, 江蘇省

Size 總面積: 350 m²

Concept Design to Site Supervision and logo design 概念設計與現場設計管理

Photo_大魚攝影團隊

This project is located at the crossroads of the busy street in Xiyuan, Xuzhou. Xiyuan is an old area with a dense population and busy atmosphere, however, there are few public spaces in the surrounding area. Although the starting point of this project is the sales office, it is intended to provide a free and open space for the surrounding residents, especially children and families.

The scope of the project site is rather special. It is narrow and long, only 5m at the widest point. The height of the surrounding buildings is relatively low and the volume is relatively small. So in combination with the surrounding situation and the project land, a concept consisting of a patchy distribution of boxes in different sizes is formed.

The proximity to the crossroads makes it a visually focused spot. Therefore, the designer hopes to create a broad view effect similar to stage. The exterior wall of the building uses a new type of translucent PC board (polycarbonate board). This material is lightness, transparency, and a certain degree of reflection. During the daytime, the shadow of the roadside trees is cast on the wall of the building. Through the wall, you can vaguely see the interior at the same time. At night, the lights in the room pass through the PC boards, making the entire building like a glowing box.





Due to the discrepancies of the various buildings, a rich experience is created inside. The height differences and part of the ground elevation generate different regions, partial ceilings are PC boards that also create various light shades indoors at different times. The entrance hall is 8m high and is the largest box. This space is placed in five individual quantities, and the negative space is formed between each two individual quantities, which becomes a display of children's play places and various life scenes. Each negative space uses a different color, and the transparency of the space makes it possible to see different colors and scenes from different angle. Parents can also see children playing in the distance while visiting the scenes. The entire interior is simple and bright without too much decoration, the large transparent glass facade and the translucent PC board provide a panoramic view of the outdoors.







本項目位于徐州市西苑繁華街區的十字路口。西苑是一個老城區，人口密集，煙火氣息濃厚，但周邊完善的公共空間相對較少。本項目雖出發點為售樓處，但意在為周邊居民尤其兒童家庭提供一個自由、開放的活動空間。

項目用地範圍比較特殊，整體狹窄而長，最寬處僅有5m。周邊建築高度較低，體量也相對較小，結合周邊城市肌理及項目用地，形成這樣一個由大小高低不一的盒子錯落分布組成的概念。緊鄰十字路口這樣優越的地理位置，使之成為視覺上的聚焦點。所以，設計師希望能夠打造一個視野通透、如舞台一般的建築效果。建築外牆采用新型半透明材料PC板（聚碳酸酯板），這種材料的特征為輕盈、通透，而且具有一定的反射能力。白天，路邊行道樹的影子投在建築牆面上，透過牆面同時可以隱約看到室內。夜晚，室內的燈光透過PC板，使整個建築像一個個發光的盒子。

由于建築各個體量的錯落，使室內形成豐富的體驗感。高度的不同和局部地面的擡高產生區域性，局部天花為PC板也使室內在不同時間段形成各種光影。入口大廳挑高8m，為其中最大的一個盒子。該空間置入5個體量，每2個體量之間局部形成負空間成為孩子的遊戲場所和各種生活場景的展示。每個負空間采用不同的顏色，空間的通透性使得從每個角度都可以看見不同的顏色及場景，家長在參觀的同時也可以看見遠處玩耍的孩子。整個室內簡潔明亮，不作過多裝飾，立面通透的大玻璃和半透明的PC板使室外的風景盡收眼底。





ODD. Design & Build

HK.

Retail



PIERRE MARCOLINI CHENGDU TAIKOOLI

PIERRE MARCOLINI 成都太古裏店

2021 completed

完成

Type 類型: Retail

零售店零售店

Location 地址: TAIKOOLI Chengdu China

远洋成都太古裏, 成都, 中国

Size 總面積: 87 m²

Concept Design to Site Supervision and logo design 概念設計與現場設計管理

Photo_Ruijing photo



YIN Fine Jewelry Boutique

YIN隱概念精品店

2019 completed 完成

Type類型: Boutique 珠宝精品概念店

Location 地址: Beijing, China 北京

Size總面積: 38 m²

Concept Design to Site 概念設計與現場設計管理

Supervision Photo_Ruijing photo (廣松

美佐江)

Contrasting strikingly from traditional Chinese gold jewelry, YIN, an independent fine jewelry brand in China, designs their products in a minimal and delicate theory. It faithfully sticks to their design aesthetics that is to create gold tattoo profoundly companying with the owner in both physical and mental.

The trial of this conceptual boutique store is regarded as an aesthetical discovery of minimalist and the design connotation. In order to maximally present and elaborate these jewelries, it was finally decided to be furnished into a wonderland under 'the sea of clouds'.

Every single jewelry from YIN is a symbolic story. Drawing more attention on the space quality and brightness, we designed a display space under the 'clouds' to give a chance for those jewelries to narrate their unique stories hiding behind. When wandering through the clouds, to explore the design story behind and to harvest the beauty of golden inspiration.

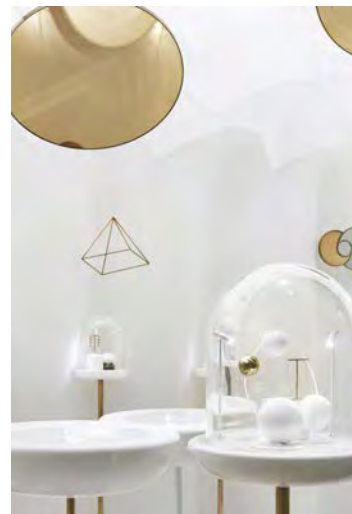




The site is not large, measuring about 10.6 meters long and 3.5 meters across. The scale did not become a restriction to our imagination. Metaphorizing the 10.6 meters length into sky, a drapery with soft surface stretching long and unbroken blurred the space boundary. Meanwhile, the ceiling was designed to be undulating to digest the stiff structural elevation difference.

Artificial stone from overseas has been used and presented the jewelry booth into a continuous floating cloud image, which not only highlights the space but also singularizes the warmth and softness. With a soft and mild line shape, the white booth is able to gently catch customer's attention and guide them to the products. Golden pedestal is the shadow of clouds.

The lighting utilized in this space has brought brightness to the entire space, not scattered or motionless, but in a way of well-proportioned and dynamic, like Tyndall Effect. The space is a story-teller, and also a tiny gallery of gold jewelry.



YIN Fine Jewelry Boutique 1.1

YIN隱 上海/深圳店

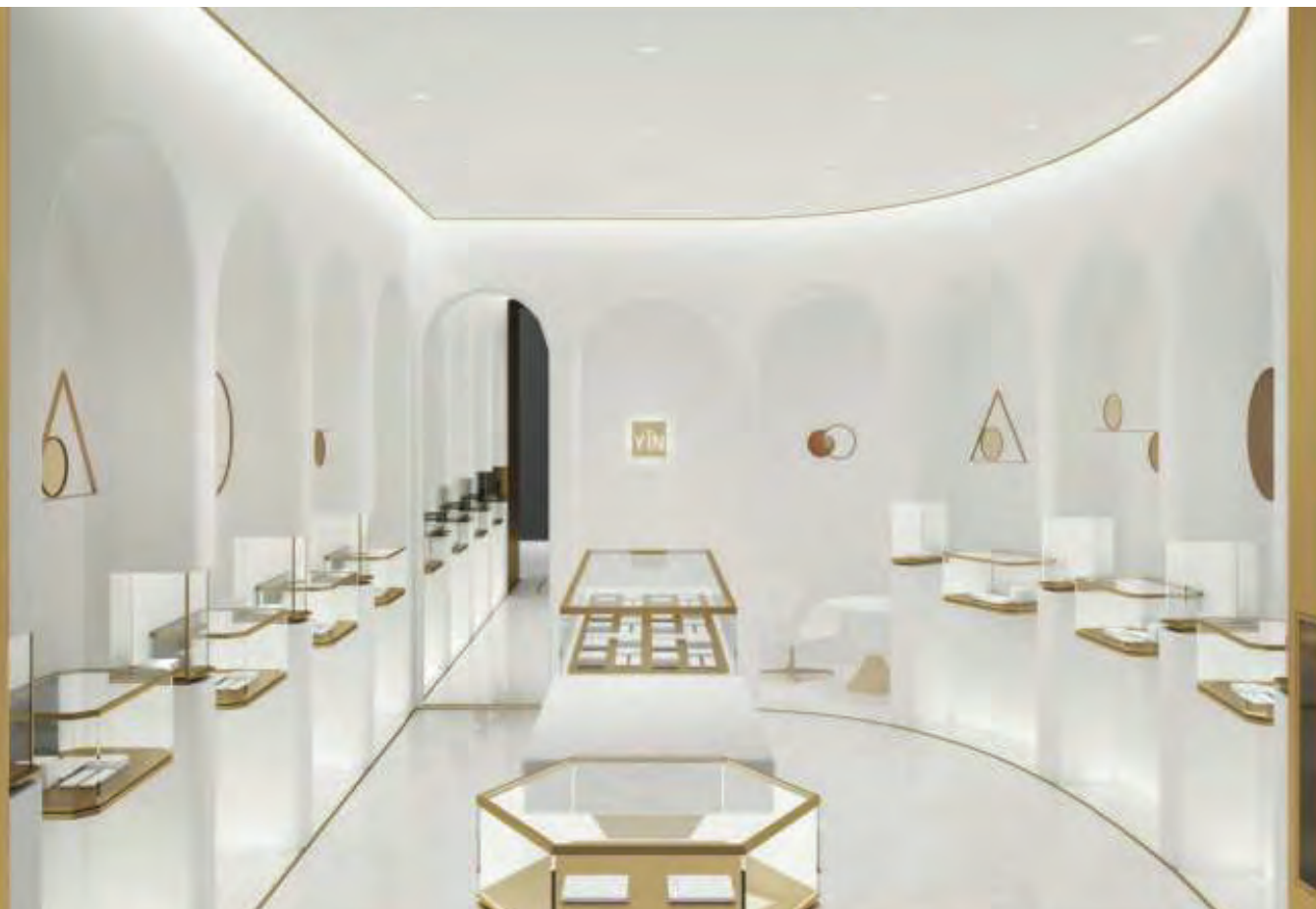
2020 completed 完成

Type 類型: Boutique 珠寶精品店

Location 地址: Shanghai/Shenzhen 上海 / 深圳

Size 總面積总面积: 45 m²/35 m²

Concept Design to Site Supervision and logo design 概念設計與現場設計管理



YIN Fine Jewelry Boutique 2.0

YIN隱 北京旗艦店

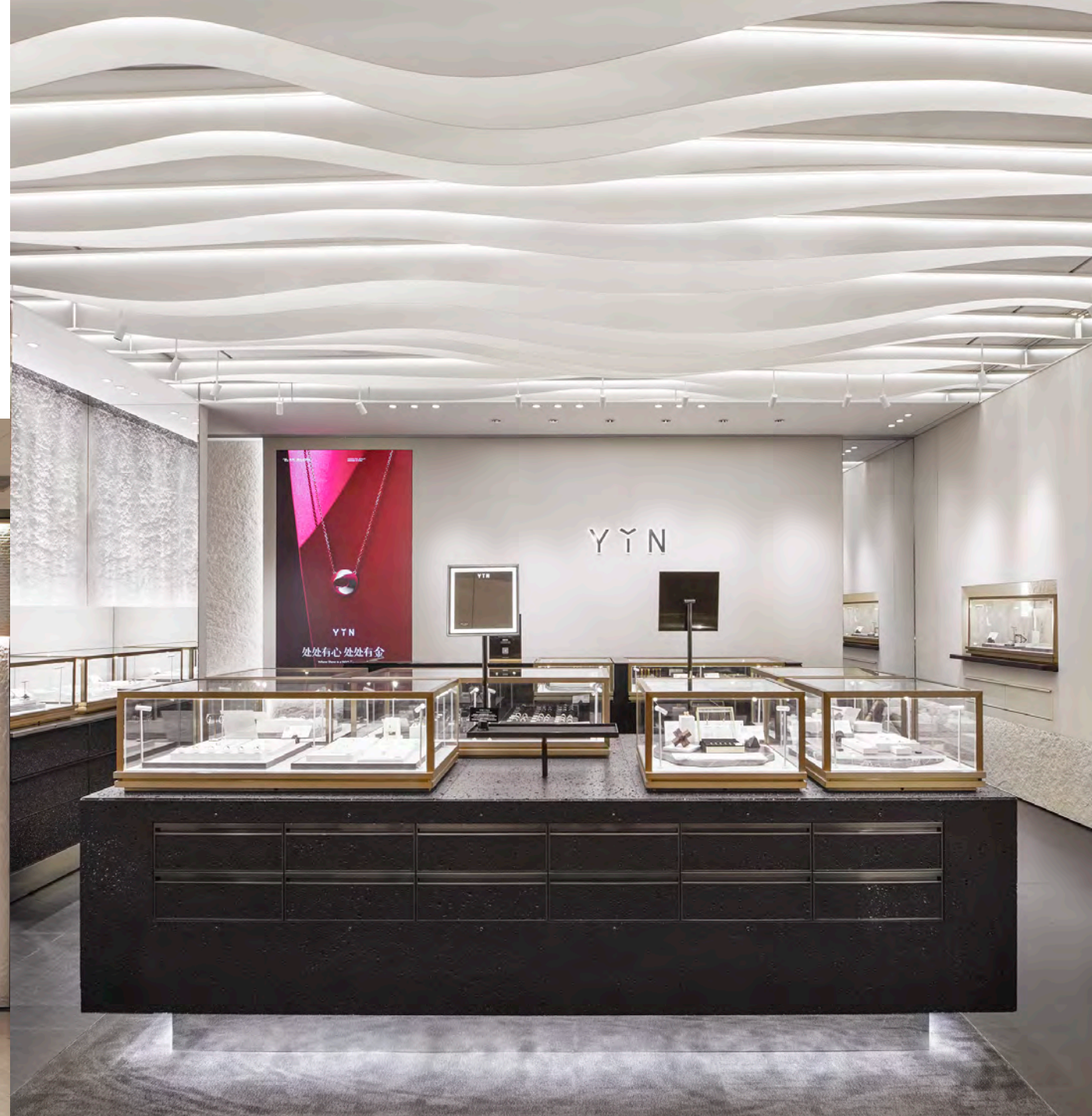
2023 completed 完成

Type 類型: Boutique 珠寶精品店

Location 地址: Beijing 北京

Size 總面積: 45 m²

Concept Design to Site Supervision and logo design 概念設計與現場設計管理





In keeping with the brand's concept, granite stones quarried in the Taihang Mountains are chosen, and nearly a ton of rough stone cuts to support the show stand at the shop entrance. Half of the stone retains its natural texture and the other half is polished to a smooth mirror texture. The brand logo is engraved into the stone as its tattoo, carrying the display of the season's new jewelry steadily. The contrasting textures of the natural stone and the soft stone on the façade show us the different possibilities of the same material while conveying the beauty of contrast and unity between natural growth and artificial intervention.



The addition of curved aluminum panels to the ceiling breaks the linear feel of the walls, creating a dynamic extension like clouds and water, and the distribution of the panels in a 'Z' shape dissolves the sense of louvers and makes them more interesting.

NAMA COCOA

納摩可可

2022 on progress

正在進行

Type 類型: retail

店鋪

Location 地址: Wuhan/Xiamen/Chengdu/Beijing 武漢/廈門/成都/北京

Size 總面積: 20-40m²

Concept Design to Site Supervision 概念設計與現場設計管理



The Forbidden City - Lifestyle Experience Center 故宮生活體驗中心

2021 Proposal

概念設計

Type 类型: Exhibition 體驗中心

Location 地址: The Forbidden City Beijing China 故宮, 北京, 中國

Size 總面積: 290 m²

Concept Design

概念設計



751 Popup store Beijing Design Week

751 設計師商店 北京設計周

2016 completed

Type : shop 商店

Location : Beijing 北京

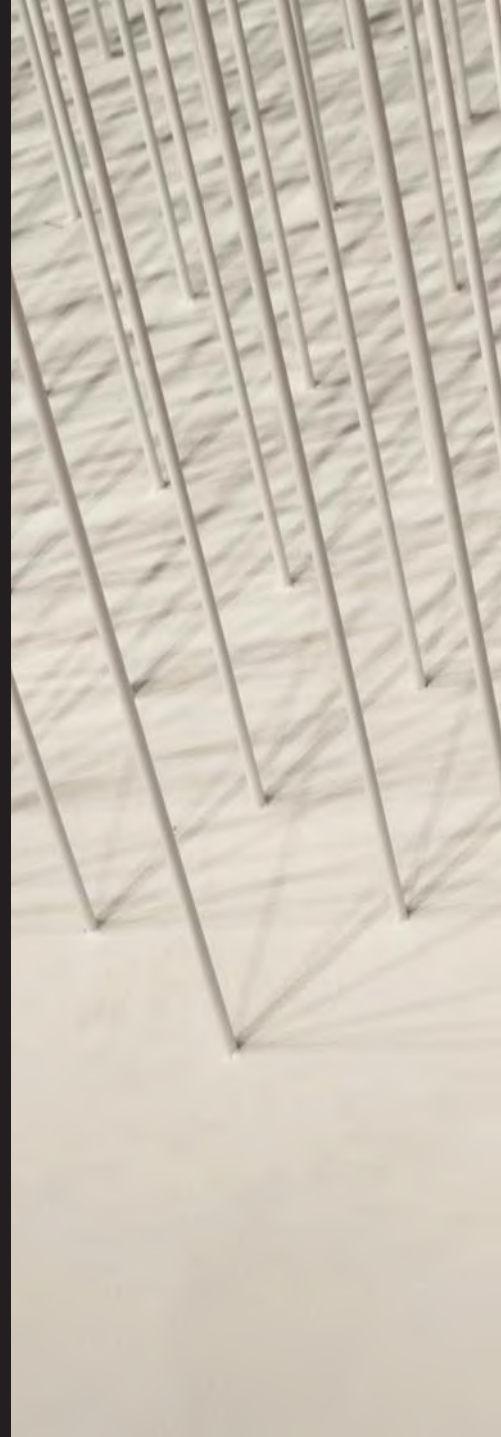
Size : 1500 m²

Concept design to Site Supervision

751 POP UP STORE位于751時尚回廊一層，是以販售全球精選設計商品為核心的設計品商店。2016北京國際設計周期間，POP UP STORE展廳的空間設計由odd建築事務所擔綱設計，全新的展陳裝置使人耳目一新。

時尚回廊由十座脫硫塔改造而成，空間有濃濃的工業感、現代感。設計師將風格設定為“未來自然”，引入自然當中的山水形態。從入口進入，10座高低起伏、錯落流動的“山”將引導遊客走完全程。山的結構由6mm的鐵棒排列組成，擺放商品的展台點綴其中。細細的鐵棒底端固定，在空中輕微搖曳，整個空間充滿“風”的流動感。





751 POP UP STORE is located on the first floor of 751 Fashion Echo. The store primarily stocks designer goods from around the world. 751 POP UP STORE's showroom was designed by Okamoto Deguchi Design for the 2016 Beijing International Design Week. The shop design left a deep impression on visitors.

Fashion Echo is built from ten repurposed exhaust desulfurization towers. The space has a thoroughly modern and industrial feeling. The designer's "futuristic nature" style incorporates mountain and water landscapes. Upon entering the space, ten "mountains" of different heights and positions guide the visitors' path. The "mountains" are made up of 6mm iron bars, establishing the product booths. The thin iron bars are fixed in the ground, rising into the air, giving the whole space is filled with "wind".



RED HERO FASHION STORE

紅英 服裝店

2015 completed 完工

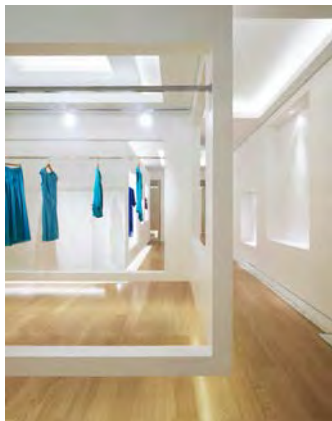
Type 類型 : Fashion Store 服裝店空間設計

Location 地址 : Beijing 北京

Size 總面積 : 150 m²

Concept Design to Site Supervision 概念設計到現場指導





本案是關於對國內連鎖服裝品牌旗下兩個子品牌“紅英”和“躍蹤”進行的店面改造。設計師在改建時必須在兩個不同的品牌之間找到平衡，將保持各自的獨立性的兩個品牌，集於同一個開放的公共空間。‘輕的盒子’是空間的主題，“懸浮”鏤空造型的輕盈盒子成為空間突出要素。單獨的品牌入口，將人流分別引入室內。一進店，便可看到以不同方式懸浮著的盒子。這些盒子劃分開兩個品牌的展示空間，盒內即為服裝展示區域。而鏤空的造型又使得圍合的盒子開放輕盈起來，具有掛杆展示功能的‘窗口’不僅能把各個盒內空間視線連接起來，使空間具有通透感，也讓兩個獨立的品牌之間產生聯系。同時牆面和天花的造型配合盒子的鏤空造型，錯落有致，更具層次感又不失空間的統一性。空間以簡約質樸的白色為主要基調，突出服裝，空間氣氛整體雅致、簡約。

ODD. Design & Build

HK.

School



Ananya Children Music Class Aranya聲聲音樂藝術館

2018 completed 完工

Type 類型 : Education 早期教育

Location 地址: Beidaihe, China 北戴河, 中國

Size 總面積 : 300 m²

Concept Design to Site Supervision 概念設計到現場指導

Photo_Ruijing Photo

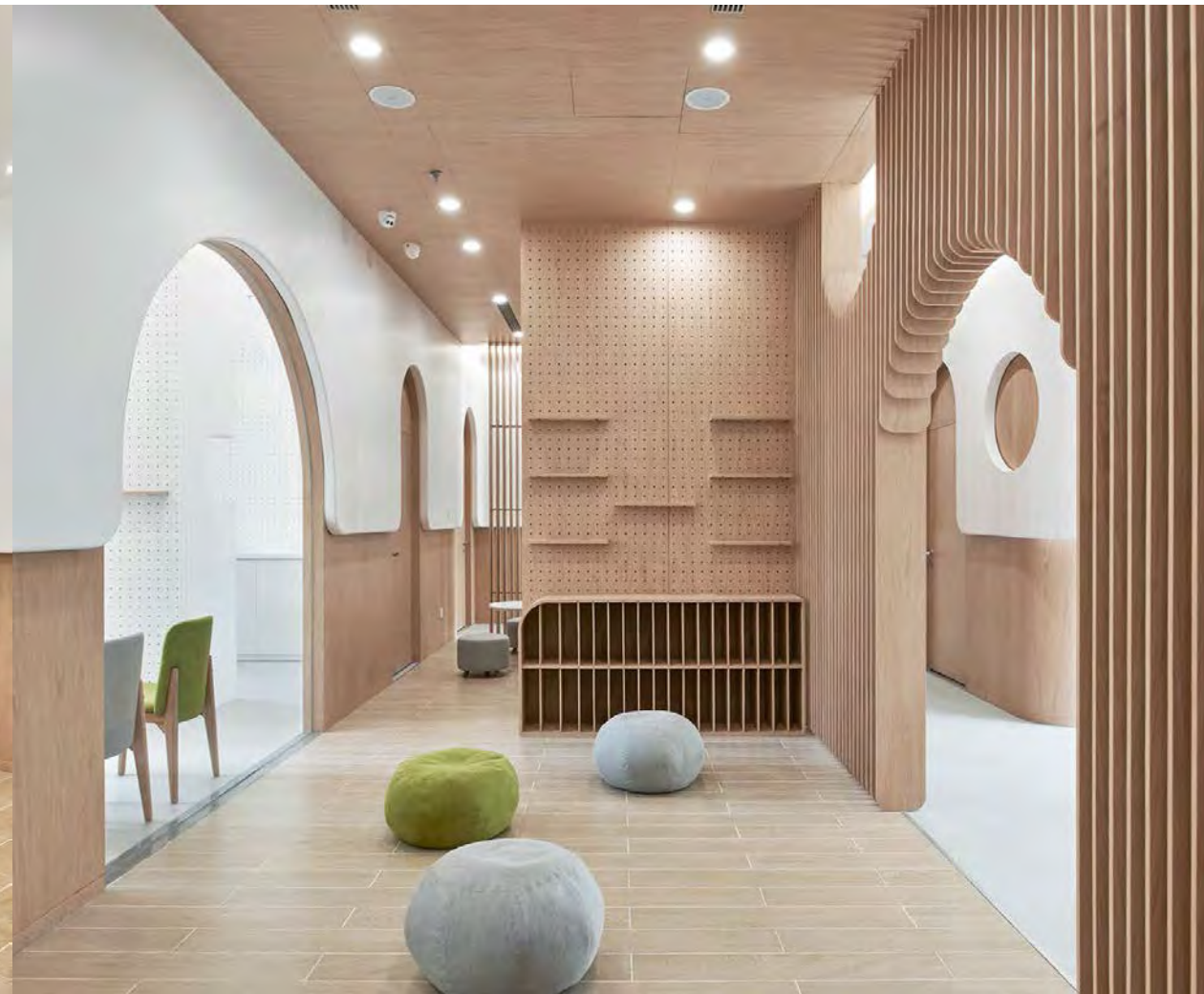


Aranya聲聲音樂藝術館是odd設計事務所受阿那亞委托，打造的一個集音樂、唱歌、舞蹈表演、手工、繪本閱讀于一體的兒童音樂藝術空間。它包含簡餐休閒區，三個獨立琴房、繪本區以及綜合舞蹈教室。

設計師希望不是給孩子一個世界，而是和他們一起創造世界，不是以具象和裝飾化的語言去給予孩子一個空間。而是以童心去構想具有無限想象力的空間。將原本三個相互獨立和封閉的空間的隔牆最大限度的拆除。通過新的設計語言去探索空間形態的趣味性，使建築固化的結構牆體消隱在空間之中。融合的同時創造出多變豐富具有探索性的空間。空間主要材質為弧形木材，營造溫暖、自然的氛圍，同時介

入兒童的尺度，置入白色連續的懸吊弧形牆體，包裹獨立封閉的空間，模糊獨立與開放的界限，形成整體的空間氛圍。曲線吊牆在空間中的變化和洞口處理，形成多個開放與半開放的空間。變化的吊牆結合立面窗戶，模糊室內與室外的空間關係。形成多變的空間類型，營造開放、自由、自然的教學環境。

獨立的琴房有隔音和吸音的要求，在了解聲學系統的基礎上，使聲學結構件融入空間設計語言，使用新型輕鋼隔聲牆體系統使牆體達到最薄，MLS擴散體與牆身融為一體，成為空間立面元素，光纖燈的使用使原本只具有功能性的穿孔吸音板呈現星空的效果。





Aranya Children's art classroom is designed by odd, which creates a children's music art space that integrates music, singing, dance performances, art work, and picture books. It contains a casual dining area, three separate piano rooms, a picture book area, and a comprehensive dance studio. The designer hopes not to give children a world but to create a world with them. Instead of giving children a space with figurative and decorative things, it is innocent to conceive space with infinite imagination. The walls of three originally independent and closed spaces were dismantled maximally. Through the new design language to explore the fun of space forms, the structural solidified wall is

hidden in space. At the same time, the fusion creates a variety of rich and exploratory feeling. The main material of the space is curved wood, creating a warm and natural atmosphere while intervening in children's scale. An overall space atmosphere is formed by putting in a white continuous suspended curved wall, wrapping the enclosed space, blurring the boundary between independence and opening. The change of the curved wall in the space and the handling of the openings form multiple open and semi-open spaces. The changing wall combined with the facade windows blurs the spatial relationship between indoor and outdoor, forming a variety of spatial types and creating an open, free and natural teaching environment. The independent piano room has soundproofing and sound absorption requirements. On the basis of understanding acoustic systems, integrating acoustic structural components into spatial design language, the new lightweight steel acoustical wall system was used to achieve the thinnest wall. The MLS diffuser integrates with the wall and becomes a spatial façade element. The use of fiber-optic lamps gives a starry sky effect, which was originally only functional perforated sound-absorbing panels.



THE FAMILIER

和美樂家庭會所

2011 Completed 完成

Type 類型: Family Club 家庭会所家庭會所

Location 地址: Beijing, China 北京798藝術區, 北京

Size 总面积總面積: 350 m²

Concept Design to Site Supervision and Graphic Design

設計, 現場設計管理與平面設計

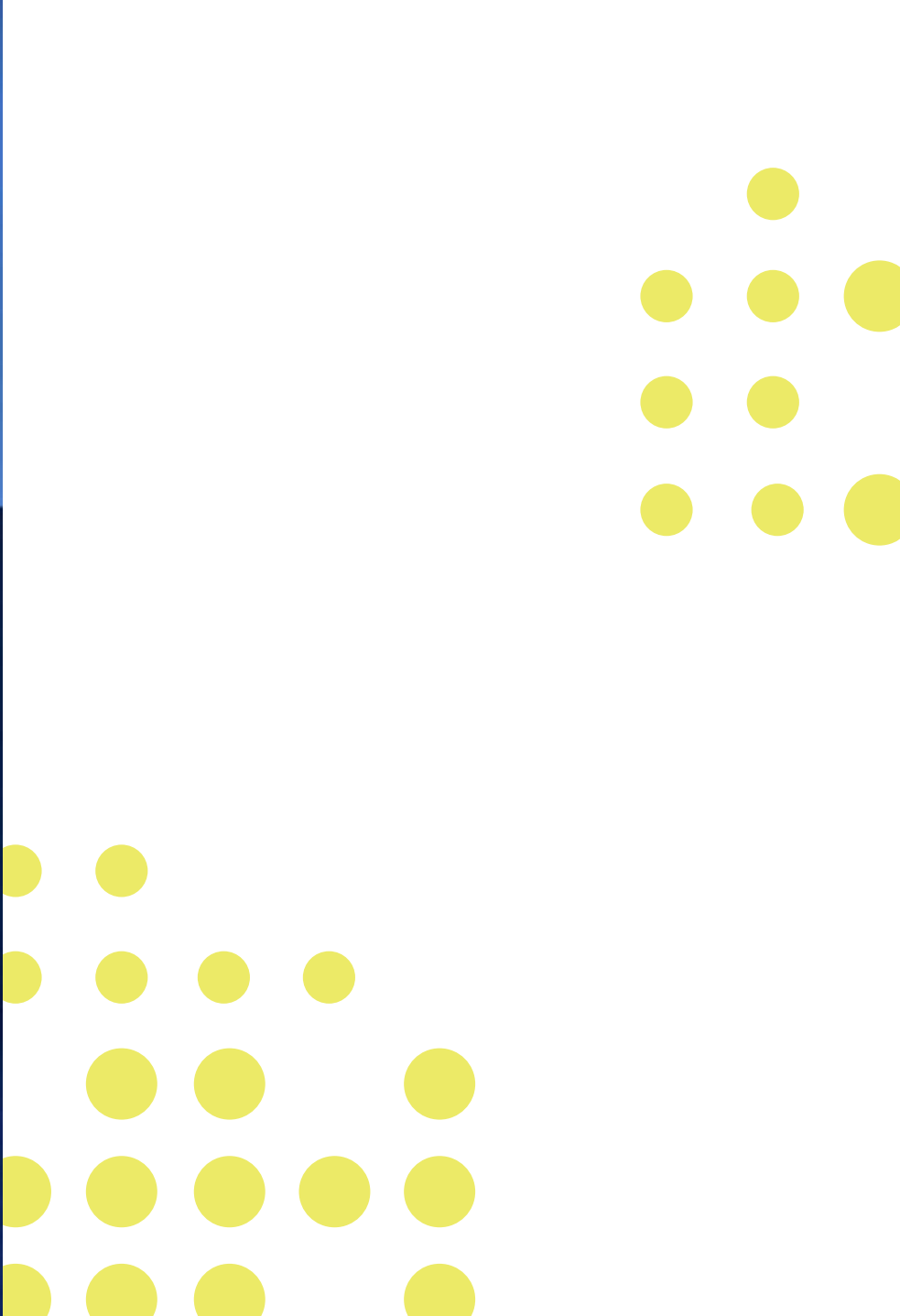
Foreign and upper class Chinese family always looks for hygienic and safe playground in Beijing. This center provides exactly what they look for. The interior space is created with the stripes of three identical company colors. These three high saturated colors arouse kids' interest of coming repeatedly.

A variety of circles, which is another identical element from their company logo, also create different elements such as watch tower window, shoes box, ceiling decoration and built-in toys. On the ceiling, 665 pieces of acrylic plate are installed to create unexpected visual effect from different angle. The experience of playing in this space stimulates kids' imagination and helps their growth.

在北京外國人和那些追求高品質生活的中國家庭總希望能找到衛生又安全的遊樂場。這個中心正為這類人所設計。內部空間豎向分別採用了公司標志的三種顏色，這三個飽和的顏色可極大的爆發孩子的興趣。

各種不同的圓圈也是該公司標志的一個重要元素。所以在小瞭望台窗戶，鞋櫃，房頂裝飾以及內置式玩具等都採用了該元素。安裝在屋頂的665個亞克力圓盤從不同角度都創造出奇幻的視覺效果。在此遊玩可以激發孩子的思維，有助於成長。





ATELIER - U

藝術畫室教室 U

2015 completed 完工

Type 類型 : Education 早期教育

Location 地址: Tianjin, China 天津, 中国

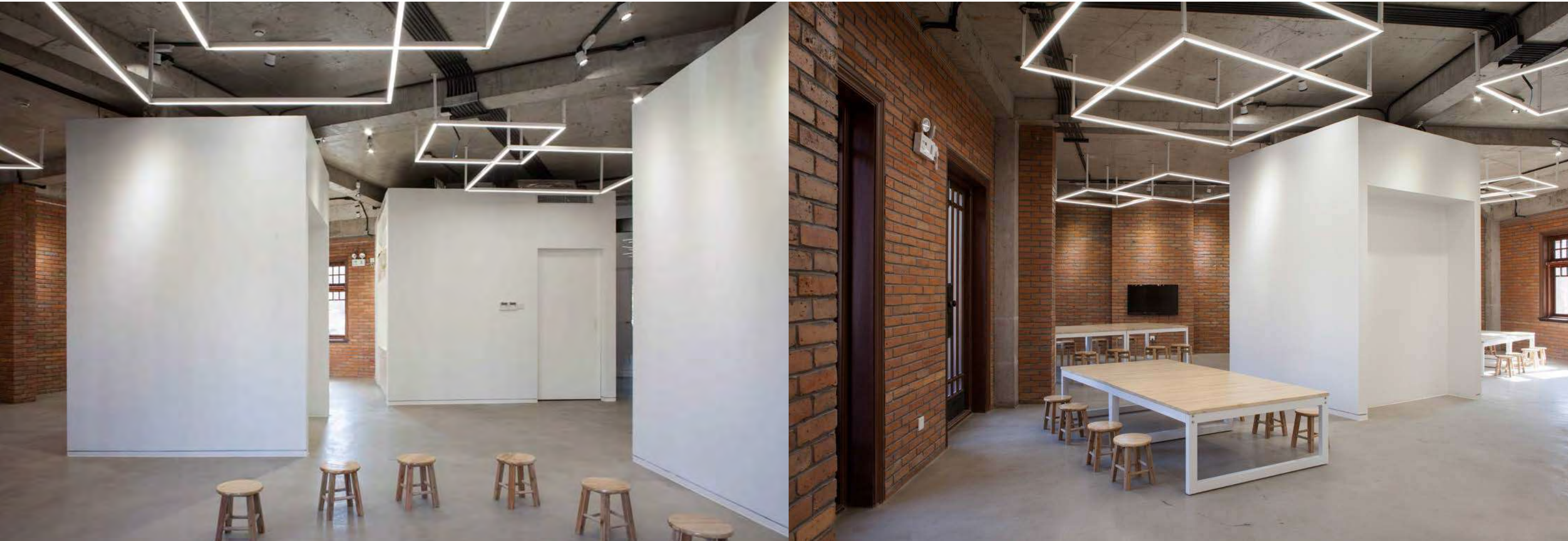
Size 总面积總面積 : 350 m²

Concept Design to Site Supervision 概念設計到現場指導

Photo_EVEN

本次設計項目位于先農商業區內，以幼兒、小學生為對象做的藝術教育設施方面的室內設計。 原建築是曾經的英租界五大道地區內的文物建築。建築因租界時期的紅磚牆外觀而被登記為文物保護對象，在做室內設計時，我們保留了原建築的要素，同時又把現代的要素導入到設計中。 我們將教室設計成藝術家工作室的風格。 教室之間並沒有用

牆壁來分割，根據具體的情況，為教室做了可以靈活布置的設計。 讓孩子們在創作中釋放天馬行空想象力的，正是那些不具任何裝飾且帶有洗手台和收納功能的白色箱體，它們被隨意的放置，也與空間內租界時期的紅磚牆進行了某種微妙的交流。這些箱子制造出室內的不確定性，靈活地劃分開了空間，可以適應各種創作活動的工作室就設計完成了。





ODD. Design & Build

HK.

Event



MAM “THE CIVIL POWER”

北京民生現代美術館開館展 “民間的力量”

2015 completed 完工

Type 類型 : Exhibition 展覽

Location 地址 : Beijing, China 北京民生現代美術館, 北京, 中國

Size 總面積 : 5000 m²

Concept Design to Site Supervision 概念設計到現場指導



本次項目為位于北京著名藝術區一角的民生現代美術館，作為開館展覽的展示空間。北京民生現代美術館的前身是一棟廠房，後由朱銘建築設計工作室設計改造。關於本次的開館展，我們利用朱銘先生設計的空間布局，將三層5000m²的巨大空間，設計成三個獨立的開放展示區域。在開放的大廳，我們決定在突出主題的同時，在空間中安置更多的藝術品。我們在最大化的尊重藝術家以及其作品的基礎上，根據藝術家的創作時間、藝術理等要素，將他們的作品分成若干個不同的集團，觀賞者可以同時觀賞到同一集團的作品。基本的展示路線十分自由，觀賞的空間場所任由每位觀賞者自己選擇，同時還可以體驗到每個展示空間所帶來的不同的創作理念與故事性。





UCCA “Hans van Dijk 5000 names” 尤倫斯當代藝術中心 “戴漢志：5000個名字”

2014 completed 完工

Type 類型: Exhibition 展覽

Location 地址: UCCA 798, Beijing, China 尤倫斯當代藝術中心, 北京, 中國

Size 總面積: 2000 m²

Concept Design to Site Supervision 概念設計到現場指導



798 藝術區內的尤倫斯當代藝術中心展覽用空間設計。
這次展覽中需要展出大量的作品，用到將近 300 米長的展示牆。最經濟也是最有效率的方式，就是設立平行的直線。但據負責人的要求，關於展覽的內容以及展示方式，長度超過 10 米的作品旁邊，會放置明信片大小的作品。由於展品的尺寸是隨機挑選的，因此，為了創造出人與作品間最合適的距離，前面所提到的設計方式便不再適用於這次展覽。鑒於這種情況，我們通過設計以八角形為基礎的展示牆，創造出多個“空間的口袋”，也就出現了多個讓人與作品產生合適觀感的空間。



UCCA “M Home”

尤倫斯當代藝術中心 “M Home：隨寓而安

2014 completed 完工

Type 类型類型 : Exhibition 展覽

Location 地址 : UCCA 798, Beijing, China 尤倫斯當代藝術中心, 北京, 中國

Size 總面積 : 2000 m²

Concept Design to Site Supervision 概念設計到現場指導

這次的設計對象，是一個以立體展示物為主的展覽空間，包括很多建築類作品。如何才能把作為背景而存在的隔斷牆與作品本身的牆壁區分開，就成了本次設計的關鍵。如果在箱狀的建築作品的背景中，設立起一定高度的牆壁，就會和作品本身重疊在一起。因此，我們把山狀的模型當做背景設計了進去。



Wuhan Univ. Centennial Presents in Return

武漢大學 “百年文脈珞珈傳薪”

2016 completed 完工

Type 類型: Exhibition 展覽

Location 地址: Wuhan Univ. Wanlin Museum 武漢大學萬林博物館, 武漢, 中國

Size 總面積: 4000 m²

Concept Design to Site Supervision 概念設計到現場指導



UKIYO E Exhibition

江戸綺想曲

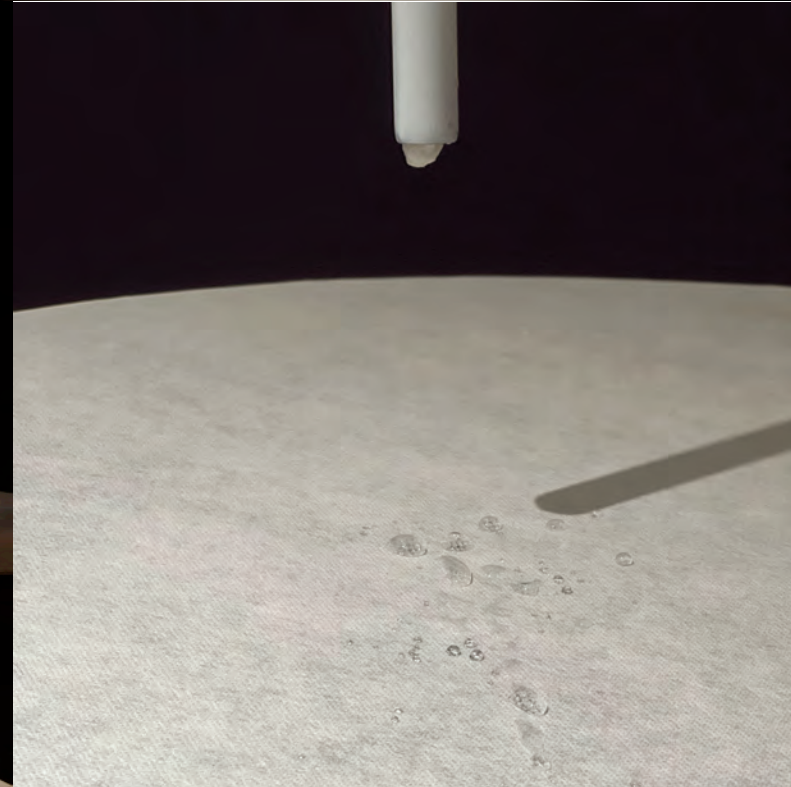
2022 completed

Type 類型: art event 展覽設計

Location 地址: Beijing 北京

總面積: -

Concept design to Site supervise 概念設計到施工指導



BMW Jeff Koons POP! with UCCA LAB

2022 completed

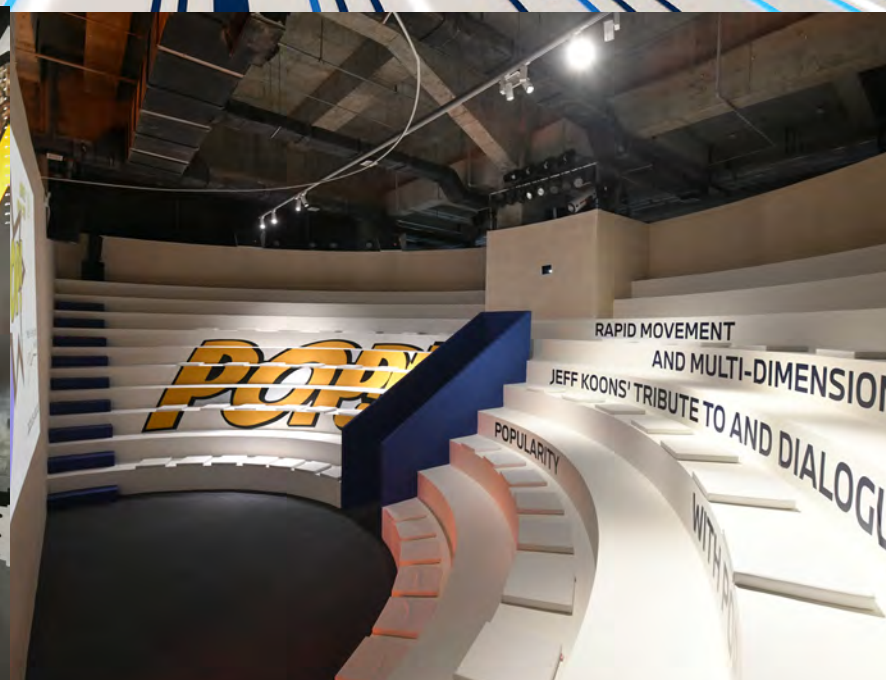
Type 類型: art event 展覽設計

Location 地址: Shanghai, Chengdu, Beijing 上海, 成都, 北京

Size 總面積: -

Concept design to Site supervise 概念設計到施工指導





NIO non-sleeping Library

蔚來 不打烊心情圖書館

2018 completed 完成

Type 類型: Event space 2018 蔚來 NIOHOUSE 東方廣場

Location 地址: Beijing China 北京, 中國

Concept Design to Site Supervision 概念設計與現場設計管理

the Deep Sea - the sea is not sleeping-

NIOHouse not-closing Mood Library is a multiple-venues installation project through unusual experience of the reading with different activities such as recitation(朗讀) read(閱讀) and listen (聽) . The sea is the source of life. It is said that there exists a plenty of unknown beings in the deep sea. The exploring the deep sea has a romance for new discovery . The reading also gives us the surprise and pleasure to find new knowledge, ideas and fiction world which you have never seen. These common attitude for seeking is suitable theme for the NIO library. We, therefore, create the deep sea atmosphere in this library.

The elements of the library such as bookshelves, seating and reading space are designed as the livings in the deep sea, i.e., books and magazines are displayed in the seaweed- or coral-like bookshelf. The library is designed with three different parts such as exploring, cheerful and calm area. In the exploring area, seaweed-like bookshelves and several installation with Kindle is located for supporting your new discovery. Coral-like bookstand and big-fish-like sofa in the cheerful area gives different experience of the reading from doing in the chair. In the calm area, the solitary seat makes private reading space with limited light and the sound of underwater, which helps to calm your mind.

Thick felt is applied for the upholstery of these furniture, whose tension and elasticity creates smooth curved shapes like ocean beings. The fine surface of this material also helps the comfortableness of sitting. In addition, the light-weight and reelable characteristic of this material realize environmental-friendly installation and transportation for the multiple venues.

Through this unordinary reading experience, we hope you find a little new discovery which gives yourself not-a-little energy for creating better coming days.

A New Day also comes in the Deep Sea.





BETTER HOMES AND GARDENS

美好家園“椿·心”

2015 completed 完工

Type 類型: Installation Space 裝置展覽空間設計

Location 地址: Beijing 金融街購物中心, 西城區, 北京

Size 總面積: 200 m²

Concept Design to Site Supervision 概念設計到現場指導





联合老牌家居园艺杂志《美好家园》Better Homes and Gardens，建造一座融合了简约几何设计（roofscape）及野生蔬菜花园理念的室内园艺空间——“椿·心”。

“椿·心”，以花草植物表达万物的复苏、生长、欣欣向荣，用一颗贴近自然的安静心灵，创造一片放松的桃源。



BRICK BY BRICK

一磚一瓦建深圳2015

2015 completed 完成

Type 类型類型: Event space 2015 深港城市 建築雙城雙年展

Location 地址: Shenzhen, China 深圳市, 中国

Concept Design to Site Supervision 概念設計與現場設計管理







ODD. Design & Build

HK.

Office



TNC-NGO Natural activity center TNC-NGO濕地自然活動中心

2015 completed 完工

Type 類型 : Natural activity center NGO自然活動中心

Location 地址 : Dongtan International Wetland Park, Shanghai, China 东滩国际湿地公园, 上海, 中国

Size 總面積: 500 m²

Concept Design to Site Supervision

Graphic Design 设计, 现场设计管理設計 現場設計管理



Chongming Dongtan Birds National Nature Reserve in Shanghai is a bird protection project of "Bird House returning to habitat" initiated by the National Nature Conservation Association (TNC) Dongtan wetland. The building is surrounded by wetlands at 360 degrees. The external space is the bird habitat, while the indoor area is also an open space for research, education, exhibition, conference and other activities. Designers need to consider the openness, flexibility and privacy of the space, as well as the unity of the building and the communication with the external natural environment.



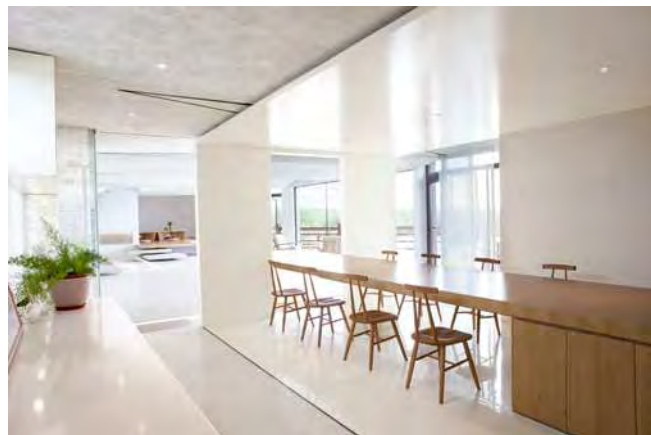
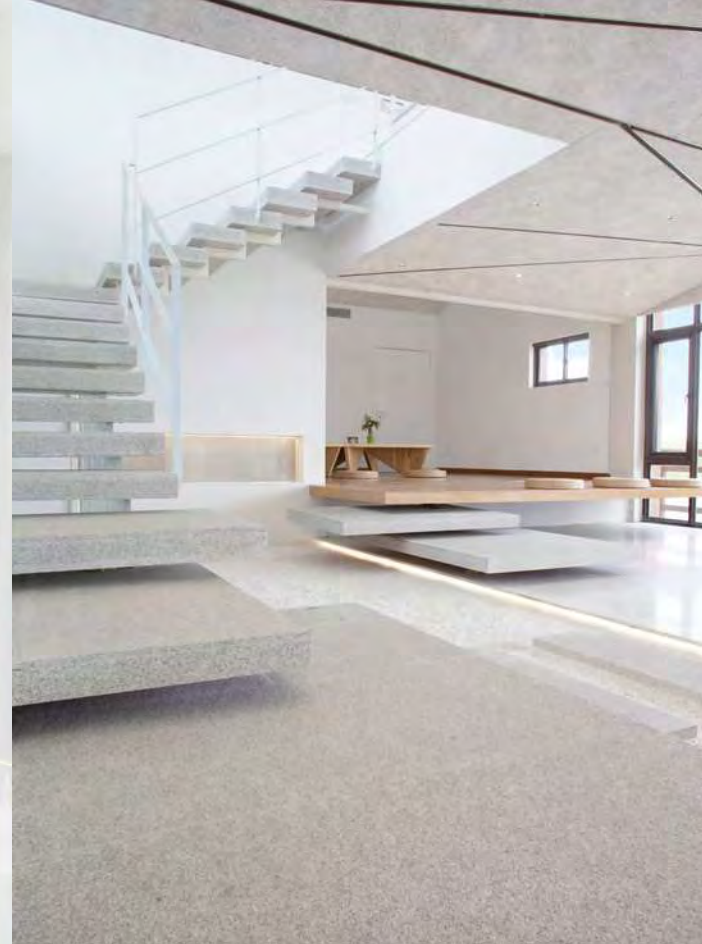
The designer divides the space by the change of vision caused by the different space height and ground material. The ground with different height difference also has the function of bench, so you can sit here to communicate with your peers or watch the rich changes of outdoor wetland landscape.

上海崇明東灘鳥類國家級自然保護區是由NGO美國大自然保護協會（TNC）東灘溼地啓動的“BirdHouse歸去來棲”鳥類保護項目區，用於水鳥棲息地研究、優化保護管理、生態體驗及提供自然教育設施。建築周邊360°都是溼地，外部空間是鳥類棲息地，室內區域則是進行研究、教育、展覽、會議等活動的開放空間。設計師在對空間的開放性、靈活性和私密性做全方位考慮的同時，思考建築空間與自然環境的關係——兩者既是和諧統一的，相互之間又是可供交流溝通的。





This kind of spatial processing not only satisfies the openness of the space, but also plans and arranges the regional function at one time. More importantly, it has more abundant communication space. The meeting area is divided into a half open box space.



The seemingly completely open meeting area is blocked by two simple walls to ensure the privacy of the participants. In addition, the characteristics of the building are reflected in the interior ceiling. The triangular sloping ceiling is unified with the inclined roof of the building. The dividing line of the triangle formed by the track becomes the exhibition track during the exhibition. At the same time, the oblique triangle shape will wrap the original beam, and the space under the beam will be reduced as much as possible to ensure the height of the original space. The white and wooden space is also communicated by the internal artificial space and the external natural landscape.

When it unified with the external natural landscape, a bright and open area can be shown.

設計師通過空間高度和地面材質的不同而產生的視線變化來對空間進行分區，高度的變化賦予地面長椅的功能，人們可以坐在這兒與同伴交流或觀看室外溼地風景的豐富變化。這樣的空間處理既滿足了空間的開放性也對區域功能做了規劃整理，同時有了更為豐富的交流空間。會議區以一個半開敞的盒子空間做劃分，看似完全開放的會議區，通過兩個簡潔的牆面做了一定的視線阻擋，保證了與會人員的隱蔽性。另外，三角斜面的天花與建築的斜屋頂特點統一。軌道組成的三角形的分割線成為了展覽時的展示軌道。依原有房梁之勢而造的天花，將房梁包裹在內，也盡可能地保證了原有空間的高度。以白色和木質元素為主的室內空間充滿包容性，與外部大自然相互呼應，實現了空間內部與外部的連接，成為一個開放的、明亮的整體。

SINO ROCK office ICC HK

SINO ROCK 辦公室香港ICC

2015 completed 完工

Type 類型 : Office 辦公室

Location 地址 : ICC, HongKong ICC, 香港

Size 總面積 : 250 m²

Concept Design to Site Supervision 概念設計到現場設計
指導

本案是香港高層建築ICC大廈內金融投資公司的辦公室內飾設計。客戶需要滿足工作區、接待區、會議室三個主要的功能分區。設計師通過慢慢彎曲的弧形牆面將幾個空間進行規劃分割。弧形所具有的流動性和延生感又將幾個空間溫和的連接起來，同時也使得空間顯得更加的開闊，連光線在弧形的牆面上也變得柔和起來。這樣的設計既保證了會議區、接待區所需要的私密性，分區之間的空間連接性也得到滿足。

有別於一般的格子式員工辦公區。公司職員們大部分都需要外出的業務，所以不需要每個人固定的工作區域。設計師以兩大弧形桌子為中心，一個桌子為工作的自由地，而另一場一張桌子，配備了辦公器材，滿足打印復印等辦公需求，同時也是職員的交流區，職員可以圍着桌子進行輕鬆的溝通交流。簡潔的白色和溫和的木材，使整個空間處於一個明亮放鬆的氛圍下，地毯的使用讓空間更為安靜，高級。



This case is the office interior design for a financial investment company in ICC building, in Hong Kong. Customers need to meet the working area, reception area, meeting room three main functional areas. Designers divide several spaces by slowly bending curved walls. The fluidity and extension of the arc connect several spaces mildly, which also makes the space more open, and even the light becomes soft on the curved wall. This design not only ensures the privacy of the meeting area and reception area, but also satisfies the space connectivity between the zones.



It is different from the general grid office area. Most of the company's staffs need to go out for business, so there is no need to prepare everyone's fixed work area. The designer takes two large curved tables as the center; one table is the free place for work, and the other table, equipped with office equipment, to meet the office needs such as printing and copying. At the same time, it is also a communication area for staff. The staff can communicate easily around the table. Simple white and mild wood make the whole space in a bright and relaxed atmosphere. The use of carpet makes the space look more serene and advanced.

odd office

odd 事務所

2013 Completed 完成

Type 類型 : Office 工作室

Location 地址 : Fangjia Hutong, Beijing, China 方家胡同, 北京, 中國

Size 總面積 : 40 m²

Concept Design to Site Supervision Graphic

Design 設計 現場設計管理

四十平米的 odd 工作室。

如何分配好會議空間以及洗手間、茶水間等需要用水的地方，就是本次項目的重點課題。通過斜置入口和茶水間等空間互動的方式，創造了從公共走廊通向室內的門扉間的小空間，擔負起通向事務所的過渡功能。

會議用桌則沿着這一斜置的空間，斜置於房間的中心。而周圍着它分配的工作臺，則方便了辦公室內的相互交流。



ODD. Design & Build

HK.

Home



TAOYUKOU FARM HOUSE

桃峪口農家小院

2013 completed 完成

Type : Farm house architecture & interior design & Landscape design 農家小院建築室內設計

Location : Taoyukou, Beijing 郊外, 北京

Size : 1000 m²

Concept Design to Site Supervision 建筑/室内/景观设计, 現場設計管理

合作单位: KiKi ARCHi

Photo_Ruijing photo (廣松美佐江)

This is a farm housing project by the great wall in the suburb of Beijing. The owner of the house owns a restaurant in the center of the city and wants to have a shelter for experiencing natural environment for his wife and son. The newly built brick-wall building is located by avoiding existing trees. And they are connected by semi-outdoor spaces. These semi-outdoor spaces made of glass and greenhouse function and they can enjoy farming in the winter. The house with three guestrooms is not only for their own use and also for rent to others who want to have garden wedding party.

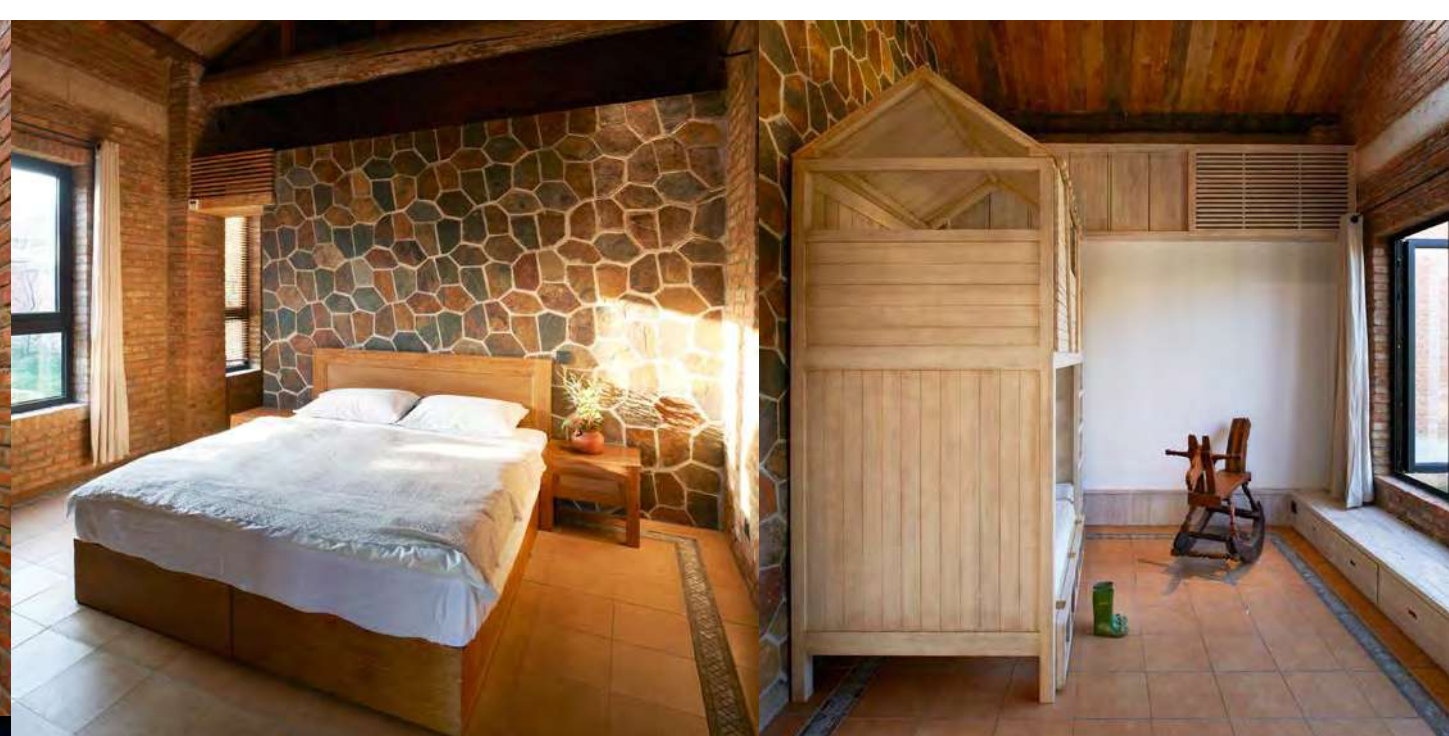
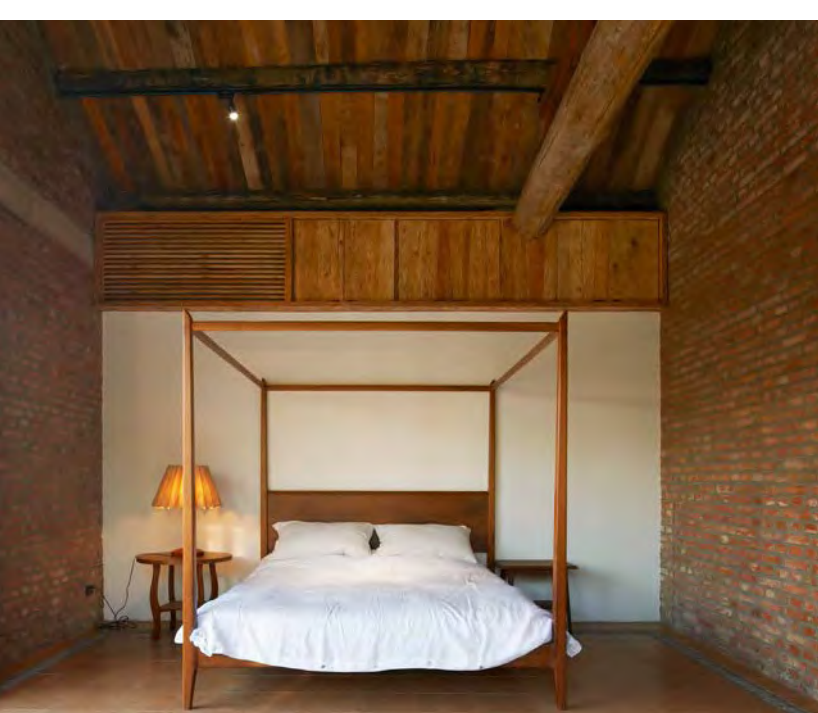




在提供的1000平米範圍的區域內，原本只有一個面積為100平米的矩形老房子，以外都是綠地。我們考慮將現有老房保留，採用與保留的老房相同的結構，新建三所獨立的紅磚房，分別布置廚房、餐廳、客廳和客房等功能空間。四個相對獨立的磚房空間由一組白色玻璃房穿插連接，形成一組自然、有特色的生活空間。1000平米的使用區域內，所有空間體量交錯布置，將室外空間劃分為如前庭、中庭、後庭等空間。四季交替，使用者在不同空間能夠享受到不同空間形態表達的庭院。

我們重新梳理鄉村生活秩序，不僅僅是簡單地逃離緊張、快節奏的都市生活，我們希望使用者在此享受放鬆、安靜的鄉野生活外，感受到空間的幸福。我們理解的特殊材質或許是可以進行意志表達的材質。打造房子所使用的材料基本上都是因地取材，一個空間的存在不會獨立於其所在的環境，當地人文、地域特徵已經能夠很好地表達出一個我們想要的空間感覺了，我們只是在細部將老木板、老紅磚、石塊等進行質感的整理，滿足使用功能及視覺的需求。





GULOU HUTONG HOUSE

鼓樓胡同住宅

2013 Completed 完成

Type 類型: Residence 住宅

Location 地址: Beijing, China 鼓樓, 北京

Size 總面積: 70 m²

Concept Design to Site Supervision 概念設計與現場設計管理

photo_Ruijing photo (廣松美佐江)

Recover by 'dis'cover

Beijing is presently filled with historical building and contemporary architecture. That is to say the chaotic city. In this city, there is one district called Hutong to keep this historic scene. This district is originally crowded with anonymous Beijing traditional courtyard houses called Siheyuan. The courtyard houses was subdivided into small parcel and provided to different families. In result, it is hard to say that it has suitable living environment for present.

To rediscover the fascinating point of the building lost by the subdivision, we "dis"cover the decorative ceiling and wall paint and boldly show off the original ceiling wood beam and brick walls. For the indispensable function for

contemporary lifestyle such as toilet and shower room is put in an inorganic white box, which is independently placed from the traditional building.

By coexisting the organic material and newly-built inorganic white space, we reconstructed different value on the traditional Hutong house, which recover to the appropriate space to contemporary lifestyle.





現在的北京是一座歷史建築物和現代化建築物相互交錯的城市。在一些地區和胡同中，仍然存在着一些保留着最初風格的街道。這些街區原本由傳統的四合院所包圍，但由於政府將原有四合院進行了細小分區，導致居民的居住面積變小，居住環境變差。

為了再現古老胡同建築的魅力，我們決定拆除裝修好的天花板，去掉牆壁的塗料，大膽地重現建築物中磚瓦、木梁等本來結構的面貌。同時，為了配合現代人的生活習慣，浴室和廁所會採用白色無機質材料所制的馬桶和洗手臺，來實現兩種不同建築空間的混合布局。

我們的設計將具有歷史痕跡的院落空間與具有現代感的白色空間相互融合，使傳統的胡同建築有了新的價值觀，變成更符合現代人生活方式的空間。

KEIZO HOUSE

永恆胡同住宅

2014 completed 完成

Type : Residence 住宅

Location : Beijing, China 永恆胡同, 北京

Size : 50 m²

Concept Design to Site Supervision 室內設計, 現場設計管理



這是為位於胡同中大雜院的民房所做的設計。房屋建齡雖有百餘年，卻是一家與“歷史”、“傳統”等字眼無緣的老舊民居。本次的項目就是改造這家民居。為了大膽地表現出民居樸素的魅力，我們做了不破壞雜院整體性的設計。在房屋內部，通過傾斜插入loft箱體的方式，使得現代的衣食住從百年時光的流逝中獨立出來。傾斜的方式會使得不同空間的邊界變得模糊，創造出視覺上的“寬廣”。可以同時體驗到現代生活與建築過去記憶的民居就改造完成了。



This is a design for a residential house located in the middle of a Hutong in Beijing. The house has been built for more than 100 years, but it is an old folk house that is not related to the words "history" or "tradition". This project is to transform the residential building. In order to boldly show the simple charm of folk houses, we have made a design that does not damage the integrity of the courtyard. In the interior of the house, we inserted an oblique loft box to make the modern lifestyle stands out from the passage of a hundred years. The inclined way will make the boundaries of different spaces become blurred, creating a visual "broad" and "residential". Meanwhile, people who live inside can experience the modern life and be nostalgic in an old architecture at the same time.

DONGHUAMEN HUTONG HOUSE

東華門胡同住宅

2014 Completed 完成

Type 类型類型: Residence 住宅

Location 地址: Beijing, China 东华门, 北京

Size 總面積: 180 m²

Concept Design to Site Supervision 概念設計與現場設計管理

photo_Ruijing photo (廣松美佐江)

本次的設計項目位於紫禁城東側的胡同。周邊是北京的歷史文化保護區，現在仍保留了衆多極具北京特色的老胡同，這片區域是仍然展現着古老風韻的胡同羣。本次要設計的地方，原本是三棟帶有中庭且形狀不規則的獨立建築。這三棟建築以中庭為中心，相互獨立存在。每一棟不僅面積狹小，並且地面的高差最大可達1.5米，地面高度相對複雜。以前有很多基本都當做通道或臺階來使用，未作其他用途。面對這樣的情況，首先，我們在不破壞三棟建築原有風貌的基礎上，將它們連接起來，並且新插入一棟白色建築。把擴展成四個方向的三棟由中庭連接到一起。並把這一空間當做全部居住空間的核心。中庭空間，可以當做客廳或者餐廳來使用，

此外還設立了天窗，為所有的居住空間帶來良好的天然照明。這樣，原本各自獨立的建築物也就相互有了聯系。從玄關到餐廳，再到客廳、中庭，內部與外部的邊界消失，聯系到了一起，每個場所的界限也變得不那麼清晰。這種豐富的連續性不僅解決了室內突出的高低差問題，在由三棟建築重新構成的餐廳中，這一高低差也轉化為家庭一起做菜、一起學習等互動交流的親子環境。面積不同且形狀各異的三棟建築與本來存在的高低差，經過重新設計之後模糊了之前無法有效利用的空間局限性，成為了新的中心，每一棟建築都如漸變色一般漸漸地融合成為一體，為居住者帶來了豐富的居住體驗。



The design project is located in the east hutong of the Forbidden City. The surrounding area is the historic zone of Beijing. The Cultural Reserve still retains many old hutongs with Beijing characteristics. Thereby this region is still showing the ancient charm of the Hutong group.

The place of this secondary design was originally three independent buildings with atrium and irregular shape architecture. The three buildings center on the atrium and exist independently of each other.

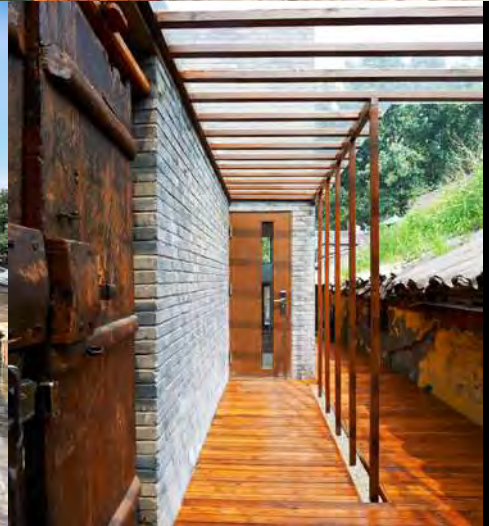


Every building is not only has tiny area, the maximum height difference of the ground is 1.5 meters, and the ground height is relatively complex. In the past, many of them were basically used as passageways or steps, not for other purposes. Under this project's condition, we decided to connect them by inserting a new white building instead of destroying the original style of the three buildings.





Three buildings in four directions are connected by atrium. And take this space as a center of all living space. Atrium space can be used as living room or dining room. In addition, skylights have been set up to provide good natural lighting for all living spaces. In this way, the original independent buildings are connected with each other. From porch to dining area, to the living room and atrium, the boundary between the interior and the outside disappears and is linked together; the boundaries of each place have become less clear. This rich continuity is not only solved the problem of indoor great height difference; The remade dining area, composed of three buildings, is also transformed into family cooking, learning and other interaction of family time.



There exists an original height difference between three various buildings. After the redesign, the space limitations that could not be effectively used before were blurred and became the new center. Each building with gradients gradually merges into the one, bring a lots of living experience for the residents

CHAOYANG PARK APARTMENT

朝陽公園公寓住宅

2015 completed 完成

Type : Residence 住宅

Location : Beijing, China 朝陽區, 北京

Size : 100 m²

Concept Design to Site Supervision 室內, 現場設計管理

Photo_Ruijing photo (廣松美佐江)



这一项目是为北京朝阳公园附近的一座公寓作的室内设计。将原本的2DK空间，根据家庭需要改造成3LDK+LOFT住宅。通常情况下，分割的房间多就会使得每个房间成为具有封闭感的拘束空间，为了应对这一问题，我们决定立体地设计连续的木质房间，创造出开放地视觉空间。此外，厨房还有阁楼上的木质房间，有窗户可以打开，使得用餐空间和客厅的空间得

以扩大。这样灵活的开放空间可以带来丰富空间体验，为居住者的生活空间带来更多选择的可能性。公寓的室内设计，由于房间本身在构造上已经定型，设计者只能在墙壁、地板等的材料上做设计。我们在这次的项目中，并没有改变住宅结构，只是通过巧妙的空间划分，将原有空间改造得更具魅力。



The project is an interior design for an apartment near Chaoyang Park in Beijing.

The original 2dk space will be transformed into a 3ldk + loft residence according to family needs.

In general, if a few rooms de divided too obviously, it will make each room look tight and depressed. In order to deal with this problem, we decided to design three-dimensional continuity.

The wooden room creates an open visual space. In addition, the kitchen also has the attic.



The wooden room with windows can be opened, so that the dining space and living room space can expand and become a whole. This flexible open space can bring rich space experience for living, which also means it gives people more living choices. We also created kids entertaining area in a little box. Since the room itself has been shaped in structure, the interior design of the apartment, the designer only are able to design on wall, floor and etc. The reason of the house looks more attractive, is that we only take advantage of clever space division instead of changing its own residential structure.



ODD. Design & Build

HK.

Art work



2014 BEIJING DESIGN WEEK

2014北京國際設計周

2014 Completed 完成

Type 類型 Installation 藝術設計裝置

Location 地址: Dashilar, Beijing, China 大柵欄, 北京, 中国

Size 總面積: 50 m²

Concept Design to Site Supervision 概念設計與現場設計管理

photo_Jin Boan



After years of city development, the construction of Beijing Hutong became even more rational. By the time, people are looking for new lifestyle, and ignored the other lives that are living together. They also play an important role in forming the Hutong living culture. Due to the exclusive texture and vivid facade, Hutong became home for cats, we try to seek and discover the new consciousness of Hutong space with the help of the cats' senses. and the home designed for cats is an experimental way to feel the other world parallel to human's.

經過長久的城市發展，北京的胡同建設趨於理性，人們主觀探究新的生活方式的同時，忽略了與我們共同生活、共同組成這個居住文化的其它居民。胡同因其獨有的肌理結構和鮮活的界面空間成為城市中貓的棲息之所，我們試圖借助它們的感官活動探尋胡同中另外的空間知覺，並通過設計制作胡同中貓的居所，來感知平行於我們的另一個世界。



2015 Completed 完成

Type 類型: Installation 藝術設計裝置

Location 地址: Dashilar, Beijing, China 大柵欄, 北京, 中國

Size 總面積: -

Concept Design to Site Supervision 概念設計與現場設計管理

一紙禁煙令，使得四九城的很多煙民從封閉的辦公區進入了開放的城市空間。規劃設計日趨完善合理的老北京胡同為煙民們提供了舒適的小憩環境，但胡同生態卻受到了煙灰廢棄物的侵擾。CBD工作圈中的人們由於每天快節奏的工作狀態，禁煙令使他們很快轉向室外環境放松，而胡同生活幾十年如一日，老北京居民們想要習慣室內禁煙則需要相對更加緩慢的適應過程。我們試圖採用一種“輕設計”的理念，在不刻意改變煙民行為習慣的前提下，結合胡同中的基礎元素，對胡同獨有的肌理結構和鮮活的界面空間巧妙地加以利用，使置身其中的煙民與居民共享設計帶來的樂趣、方便與清潔。



Since the smoking policy newly released in Beijing, many smokers turn into the open space of the city instead of the sealed office areas. More insightful and brilliant design of Hutong, a type of Chinese traditional narrow alleys in Beijing, has provided comfortable places for the smokers. However, the environment is impacted by cigarette butts. People who work in the Central Business District [CBD] live a fast-paced life, and the policy pushes them run to the open area for relaxing. Instead, the historical Hutong life has been keeping the same for years, and the Hutong locals need more time to adjust their life. We make a trial to apply the "Light Design" concept, which means it is based on original Hutong elements, and avoids changing smokers' regular behaviors directly. We aim to utilizing the unique structure and the vivid space of Hutong. The design is going to make the smokers and the locals enjoy, as well as make convenience and cleanness in Hutong.



YING GALLERY

穎畫廊 “邊界中的再生-橋”

2016 Completed 完成

Type類型: Exhibition 展覽


Location 地址: Beijing, China 草場地, 北京, 中國








 +852 6708-4940

 odd_designhk

 oddinfo@odddesignltd.com

 HK Industrial Centre, Block C, 5/F

THANK YOU

